

## Product datasheet for TP325054M

### IGFL2 (NM\_001135113) Human Recombinant Protein

#### Product data:

Product Type:	Recombinant Proteins
Description:	Purified recombinant protein of Human IGF-like family member 2 (IGFL2), transcript variant 2, full length with C-terminal MYC/DDK tag, expressed in HEK293T cells, 100 µg
Species:	Human
Expression Host:	HEK293T
Expression cDNA Clone or AA Sequence:	>RC225054 representing NM_001135113 Red=Cloning site Green=Tags(s)  MVPRIFAPAYVSVCLLLCPREVIAPAGSEPWLCQPAPRCGDKIYNPLEQCCYNDAIVSLSETRQCGPPC TFWPCFELCCLDSFGLTNDFFVVKLVQGVNSQCHSSPISSKCESRRRF  TRTRPLEQKLISEEDLAANDILDYKDDDDKV
Tag:	Myc-DDK
Predicted MW:	13.1 kDa
Concentration:	>0.05 µg/µL as determined by microplate Bradford method
Purity:	> 80% as determined by SDS-PAGE and Coomassie blue staining
Buffer:	25 mM Tris-HCl, 100 mM glycine, pH 7.3, 10% glycerol
Note:	For testing in cell culture applications, please filter before use. Note that you may experience some loss of protein during the filtration process.
Storage:	Store at -80°C after receiving vials.
Stability:	Stable for 12 months from the date of receipt of the product when appropriate storage and handling conditions are followed. Avoid repeated freeze-thaw cycles.
RefSeq:	<a href="#">NP_001128585</a>
Locus ID:	147920
UniProt ID:	<a href="#">Q6UWQ7</a>
Cytogenetics:	19q13.32
RefSeq ORF:	357
Synonyms:	UNQ645; VPRI645

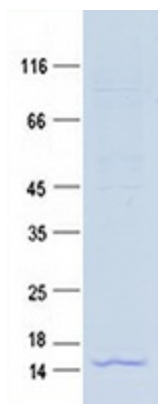


[View online »](#)

**Summary:** IGFL2 belongs to the insulin-like growth factor (IGF; see MIM 147440) family of signaling molecules that play critical roles in cellular energy metabolism and in growth and development, especially prenatal growth (Emtage et al., 2006 [PubMed 16890402]).[supplied by OMIM, Mar 2008]

**Protein Families:** Secreted Protein

**Product images:**



Purified recombinant protein IGFL2 was analyzed by SDS-PAGE gel and Coomassie Blue Staining.