

Product datasheet for **TP325029**

Glutaredoxin 1 (GLRX) (NM_001118890) Human Recombinant Protein

Product data:

Product Type:	Recombinant Proteins
Description:	Recombinant protein of human glutaredoxin (thioltransferase) (GLRX), transcript variant 2, 20 µg
Species:	Human
Expression Host:	HEK293T
Expression cDNA Clone or AA Sequence:	>RC225029 protein sequence Red =Cloning site Green =Tags(s)
	MAQEFVNCKIQPGKVVFIKPTCPYCRRAQEILSQLPIKQGLLEFVDITATNHTNEIQDYLLQQLTGARTV PRVFIGKDCIGGCSDLVSLQSGELLTRLKQIGALQ
	TRTRPLEQKLISEEDLAANDILDYKDDDDKV
Tag:	C-Myc/DDK
Predicted MW:	11.6 kDa
Concentration:	>0.05 µg/µL as determined by microplate BCA method
Purity:	> 80% as determined by SDS-PAGE and Coomassie blue staining
Buffer:	25 mM Tris-HCl, 100 mM glycine, pH 7.3, 10% glycerol
Preparation:	Recombinant protein was captured through anti-DDK affinity column followed by conventional chromatography steps.
Note:	For testing in cell culture applications, please filter before use. Note that you may experience some loss of protein during the filtration process.
Storage:	Store at -80°C.
Stability:	Stable for 12 months from the date of receipt of the product under proper storage and handling conditions. Avoid repeated freeze-thaw cycles.
RefSeq:	NP_001112362
Locus ID:	2745
UniProt ID:	P35754 , A0A024RAM2
RefSeq Size:	1093



[View online »](#)

Cytogenetics: 5q15

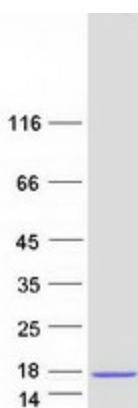
RefSeq ORF: 318

Synonyms: GRX; GRX1

Summary: This gene encodes a member of the glutaredoxin family. The encoded protein is a cytoplasmic enzyme catalyzing the reversible reduction of glutathione-protein mixed disulfides. This enzyme highly contributes to the antioxidant defense system. It is crucial for several signalling pathways by controlling the S-glutathionylation status of signalling mediators. It is involved in beta-amyloid toxicity and Alzheimer's disease. Multiple alternatively spliced transcript variants encoding the same protein have been identified. [provided by RefSeq, Aug 2011]

Protein Families: Druggable Genome

Product images:



Coomassie blue staining of purified GLRX protein (Cat# TP325029). The protein was produced from HEK293T cells transfected with GLRX cDNA clone (Cat# [RC225029]) using MegaTran 2.0 (Cat# [TT210002]).