

Product datasheet for **TP325004M**

SYCE3 (NM_001123225) Human Recombinant Protein

Product data:

Product Type:	Recombinant Proteins
Description:	Recombinant protein of human chromosome 22 open reading frame 41 (C22orf41), 100 µg
Species:	Human
Expression Host:	HEK293T
Expression cDNA Clone or AA Sequence:	>RC225004 representing NM_001123225 Red =Cloning site Green =Tags(s) MDDADPEERNYDNMLKMLSDLNKNKLEKLLLEEMEKISVQATWMAYDMVVMRTNPTLAESMRRLEDAFVNCK EEMEKNWQELLHETKQRL TRTRPLEQKLISEEDLAANDILDYKDDDDKV
Tag:	C-Myc/DDK
Predicted MW:	10.4 kDa
Concentration:	>0.05 µg/µL as determined by microplate BCA method
Purity:	> 80% as determined by SDS-PAGE and Coomassie blue staining
Buffer:	25 mM Tris-HCl, 100 mM glycine, pH 7.3, 10% glycerol
Preparation:	Recombinant protein was captured through anti-DDK affinity column followed by conventional chromatography steps.
Note:	For testing in cell culture applications, please filter before use. Note that you may experience some loss of protein during the filtration process.
Storage:	Store at -80°C.
Stability:	Stable for 12 months from the date of receipt of the product under proper storage and handling conditions. Avoid repeated freeze-thaw cycles.
RefSeq:	NP_001116697
Locus ID:	644186
UniProt ID:	A1L190
Cytogenetics:	22q13.33
RefSeq ORF:	264

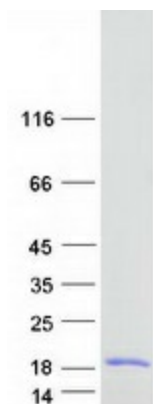


[View online »](#)

Synonyms: C22orf41; THEG2

Summary: Major component of the transverse central element of synaptonemal complexes (SCS), formed between homologous chromosomes during meiotic prophase. Required for chromosome loading of the central element-specific SCS proteins, and for initiating synapsis between homologous chromosomes. Chromosome loading appears to require SYCP1. Required for fertility. [UniProtKB/Swiss-Prot Function]

Product images:



Coomassie blue staining of purified SYCE3 protein (Cat# [TP325004]). The protein was produced from HEK293T cells transfected with SYCE3 cDNA clone (Cat# [RC225004]) using MegaTran 2.0 (Cat# [TT210002]).