

## Product datasheet for **TP324998L**

### LCE6A (NM\_001128600) Human Recombinant Protein

#### Product data:

Product Type:	Recombinant Proteins
Description:	Recombinant protein of human late cornified envelope 6A (LCE6A), 1 mg
Species:	Human
Expression Host:	HEK293T
Expression cDNA Clone or AA Sequence:	>RC224998 representing NM_001128600 <span style="color: red;">Red</span> =Cloning site <span style="color: green;">Green</span> =Tags(s)  MSQQKQQSWKPPNVPKCSPPQRSNPCLAPYSTPCGAPHSEGCHSSSRPEVQKPRRARQKLRLCLSRGTTY HCKEEEECEGD  <span style="color: red;">TR</span> <span style="color: green;">TRPLEQKLISEEDLAANDILDYKDDDDKV</span>
Tag:	C-Myc/DDK
Predicted MW:	8.8 kDa
Concentration:	>0.05 µg/µL as determined by microplate BCA method
Purity:	> 80% as determined by SDS-PAGE and Coomassie blue staining
Buffer:	25 mM Tris-HCl, 100 mM glycine, pH 7.3, 10% glycerol
Preparation:	Recombinant protein was captured through anti-DDK affinity column followed by conventional chromatography steps.
Note:	For testing in cell culture applications, please filter before use. Note that you may experience some loss of protein during the filtration process.
Storage:	Store at -80°C.
Stability:	Stable for 12 months from the date of receipt of the product under proper storage and handling conditions. Avoid repeated freeze-thaw cycles.
RefSeq:	<a href="#">NP_001122072</a>
Locus ID:	448835
UniProt ID:	<a href="#">A0A183</a>
Cytogenetics:	1q21.3
RefSeq ORF:	240

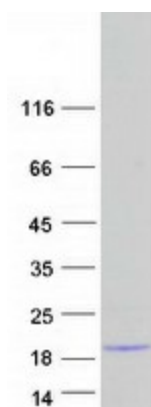


[View online »](#)

Synonyms: C1orf44

Summary: Precursors of the cornified envelope of the stratum corneum.[UniProtKB/Swiss-Prot Function]

### Product images:



Coomassie blue staining of purified LCE6A protein (Cat# [TP324998]). The protein was produced from HEK293T cells transfected with LCE6A cDNA clone (Cat# [RC224998]) using MegaTran 2.0 (Cat# [TT210002]).