

## Product datasheet for **TP324993M**

### **TOMM6 (NM\_001134493) Human Recombinant Protein**

#### Product data:

Product Type:	Recombinant Proteins
Description:	Recombinant protein of human translocase of outer mitochondrial membrane 6 homolog (yeast) (TOMM6), nuclear gene encoding mitochondrial protein, 100 µg
Species:	Human
Expression Host:	HEK293T
Expression cDNA Clone or AA Sequence:	>RC224993 representing NM_001134493 <b>Red</b> =Cloning site <b>Green</b> =Tags(s)
	MASSTVPVSAAGSANETPEIPDNVGDWLRGVYRFATDRNDFRRNLILNLGLFAAGVWLARNLSIDIDLMAP QPGV
	<b>TR</b> TRPLEQKLISEEDLAANDILDYKDDDDKV
Tag:	C-Myc/DDK
Predicted MW:	7.8 kDa
Concentration:	>0.05 µg/µL as determined by microplate BCA method
Purity:	> 80% as determined by SDS-PAGE and Coomassie blue staining
Buffer:	25 mM Tris-HCl, 100 mM glycine, pH 7.3, 10% glycerol
Preparation:	Recombinant protein was captured through anti-DDK affinity column followed by conventional chromatography steps.
Note:	For testing in cell culture applications, please filter before use. Note that you may experience some loss of protein during the filtration process.
Storage:	Store at -80°C.
Stability:	Stable for 12 months from the date of receipt of the product under proper storage and handling conditions. Avoid repeated freeze-thaw cycles.
RefSeq:	<a href="#">NP_001127965</a>
Locus ID:	100188893
UniProt ID:	<a href="#">Q96B49</a>
Cytogenetics:	6p21.1

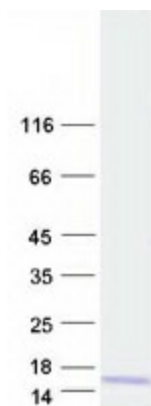


[View online »](#)

RefSeq ORF: 222

Synonyms: OBTP; TOM6

### Product images:



Coomassie blue staining of purified TOMM6 protein (Cat# [TP324993]). The protein was produced from HEK293T cells transfected with TOMM6 cDNA clone (Cat# [RC224993]) using MegaTran 2.0 (Cat# [TT210002]).