

## Product datasheet for **TP324986M**

### Small EDRK rich factor 1 (SERF1A) (NM\_022968) Human Recombinant Protein

#### Product data:

Product Type:	Recombinant Proteins
Description:	Recombinant protein of human small EDRK-rich factor 1A (telomeric) (SERF1A), transcript variant 2, 100 µg
Species:	Human
Expression Host:	HEK293T
Expression cDNA Clone or AA Sequence:	>RC224986 representing NM_022968 <b>Red</b> =Cloning site <b>Green</b> =Tags(s)  MARGNQRELARQKNMKKTQEISKGKRKEDSLTASQRKQRDSEIMQEKKQAANEKSMQTREK  <b>TRTRPLEQKLISEEDLAANDILDYKDDDDKV</b>
Tag:	C-Myc/DDK
Predicted MW:	7.2 kDa
Concentration:	>0.05 µg/µL as determined by microplate BCA method
Purity:	> 80% as determined by SDS-PAGE and Coomassie blue staining
Buffer:	25 mM Tris-HCl, 100 mM glycine, pH 7.3, 10% glycerol
Preparation:	Recombinant protein was captured through anti-DDK affinity column followed by conventional chromatography steps.
Note:	For testing in cell culture applications, please filter before use. Note that you may experience some loss of protein during the filtration process.
Storage:	Store at -80°C.
Stability:	Stable for 12 months from the date of receipt of the product under proper storage and handling conditions. Avoid repeated freeze-thaw cycles.
RefSeq:	<a href="#">NP_075257</a>
Locus ID:	8293
UniProt ID:	<a href="#">O75920</a>
Cytogenetics:	5q13.2
RefSeq ORF:	186



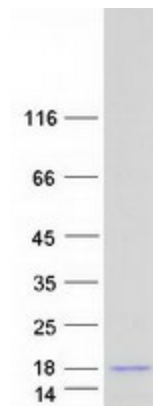
[View online »](#)

**Synonyms:** 4F5; FAM2A; H4F5; SERF1; SMAM1

**Summary:** This gene is part of a 500 kb inverted duplication on chromosome 5q13. This duplicated region contains at least four genes and repetitive elements which make it prone to rearrangements and deletions. The repetitiveness and complexity of the sequence have also caused difficulty in determining the organization of this genomic region. The duplication region includes both a telomeric and a centromeric copy of this gene. Deletions of this gene, the telomeric copy, often accompany deletions of the neighboring SMN1 gene in spinal muscular atrophy (SMA) patients, and so it is thought that this gene may be a modifier of the SMA phenotype. The function of this protein is not known; however, it bears low-level homology with the RNA-binding domain of matrin-cyclophilin, a protein which colocalizes with small nuclear ribonucleoproteins (snRNPs) and the SMN1 gene product. Alternatively spliced transcripts have been documented but it is unclear whether alternative splicing occurs for both the centromeric and telomeric copies of the gene. [provided by RefSeq, Jul 2008]

**Protein Families:** Transmembrane

### Product images:



Coomassie blue staining of purified SERF1A protein (Cat# [TP324986]). The protein was produced from HEK293T cells transfected with SERF1A cDNA clone (Cat# [RC224986]) using MegaTran 2.0 (Cat# [TT210002]).