

## Product datasheet for **TP324969M**

### Sialoadhesin (SIGLEC1) (NM\_023068) Human Recombinant Protein

#### Product data:

Product Type:	Recombinant Proteins
Description:	Recombinant protein of human sialic acid binding Ig-like lectin 1, sialoadhesin (SIGLEC1), 100 µg
Species:	Human
Expression Host:	HEK293T



[View online »](#)

**Expression cDNA Clone or AA Sequence:** >Peptide sequence encoded by RC224969  
 Blue=ORF Red=Cloning site Green=Tag(s)

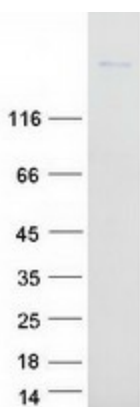
MGFLPKLLLLASFFPAGQASWGVSSPQDVQGVKGSCLLIPCIFSPADVEVPDGITAIWYYDYSGQRQV  
 VSHSADPKLVEARFRGRTEFMGNPEHRVCNLLKDLQPEDSGSYNFRFEISEVNRWSDVKGLTVTTEE  
 PRVPTIASPVELLEGTEVDFNCSTPYVCLQEQVRLQWQGDPARSVTFNSQKFPTGVGHLETLHMAMS  
 WQDHGRILRCQLSMANHRAQSEIHLQVKYAPRGVKILLSPSGRNILPGLVTLTCQVNSSYPVAVSSIKW  
 LKDGVRLQTKTGVHLHPQAAWSDAGVYTCQAENGVGSLVSPPISLHIFMAEVQVSPAGPILENQVTLV  
 CNTPNEAPSDLRYSWYKNHVLEDAHSHTLRLHLATRADTGFYFCEVQNVHGSERSGPPVSWVNHPPLT  
 PVLTAFLAQAGLVGILHCSVSEPLATLVLSHGHHILASTSGSDHSPRFSGTSGPNSLRLEIRDLEE  
 TDSGEYKCSATNSLGNATSTLDFHANAARLLISPAEVEGQAVTLSCRSGLSPTPDARFSWYLNALL  
 HEGPGSSLLLPAASSTDAGSYHCRARDGHSASGPSSPAVLTLYPPRQPTFTTRLDLDAAGAGARRGL  
 LLCRVDSPPARLQLLHKDRVATSLPSGGGCSTCGGCSPRMKVTKAPNLLRVEIHNPLLEEEGLYLCE  
 ASNALGNASTSATFNGQATVLAIPSHLQEGTEANLTCNVSREAAGSPANFSWFRNGVLWAQGPLETV  
 TLLPVARTDAALYACRILTEAGQLSTPVLLSVLYPPDRPKLSALLDMGQGHMALFICTVDSRPLALLA  
 LFHGEHLLATSLGPQVPSHGRFQAKAEANSLKLEVRELGLGDSGSYRCEATNVLGSSNTSLFFQVRGAW  
 VQVSPPELQEGQAVLSCQVPTGVPEGTSYRWYRDGQPLQESTSATLRFAAITLTQAGAYHCQAQAPG  
 SATTSLAVPISLHVSYPRHVTLTTLMDTGPGRLGLLLCRVSDPPAQLRLLHGDRVASTLQGVGGPE  
 GSSPRLHVAVAPNTRLEIHGAMLEDEGVYICEASNTLGQASASADFDAQAVNVQVWPVATVREGQLVN  
 LTCLVWTHPAQLTYTWYQDGGQRLDAHSIPLPNTVTRDATSYRCGVGPPGRAPRLSRPITLDVLYAPR  
 NLRITYLLESHGGQLALVLCVDSRPPAQLALSHAGRLLASSTAASVPNTLRELRGPQPRDEGFYSCS  
 ARSPLGQANTSLELRLEGVRVILAPEAAVPEGAPITVCADPAAHAPTLYTWYHNGRWLQEGPAASLSF  
 LVATRAHAGAYSCQAQDAQGTRSSRPAALQVLYAPQDAVLSFRDSRARSMAVIQCTVDEPPAELALS  
 HDGKVLATSSGVHSLASGTGHVQVARNALRLQVQDVPAGDDTYVCTAQNLLGSISTIGRLQVEGARVA  
 EPGLDVPEGAALNLSCRLGPGPVGNSTFAFWNDRRRLHAEPVPTLAFTHVARAQAGMYHCLAELPTG  
 AAASAPVMLRVLYPPKPTMMVFVEPEGGLRGILDCRVSEPLASLTLHLGSRLVASSQPQGAPAEPI  
 HVLASPNALRVDIEALRPSDQGEYICASNVLGSASTSTYFGVRLHRLHQFQQLLWVLGLLVGLLLLL  
 LGLGACYWRRRRVCKQSMGENSVEMAFQKETTQLIDPDAATCETSTCAPPLG  
 LEQKLISEEDLAANDILDYKDDDDKV

Recombinant protein using RC224969 also available, [TP324969M](#)

**Tag:** C-Myc/DDK  
**Predicted MW:** 180.6 kDa  
**Concentration:** >0.05 µg/µL as determined by microplate BCA method  
**Purity:** > 80% as determined by SDS-PAGE and Coomassie blue staining  
**Buffer:** 25 mM Tris-HCl, 100 mM glycine, pH 7.3, 10% glycerol  
**Preparation:** Recombinant protein was captured through anti-DDK affinity column followed by conventional chromatography steps.  
**Note:** For testing in cell culture applications, please filter before use. Note that you may experience some loss of protein during the filtration process.

<b>Storage:</b>	Store at -80°C.
<b>Stability:</b>	Stable for 12 months from the date of receipt of the product under proper storage and handling conditions. Avoid repeated freeze-thaw cycles.
<b>RefSeq:</b>	<u><a href="#">NP_075556</a></u>
<b>Locus ID:</b>	6614
<b>UniProt ID:</b>	<u><a href="#">Q9BZZ2</a></u>
<b>RefSeq Size:</b>	5130
<b>Cytogenetics:</b>	20p13
<b>RefSeq ORF:</b>	5127
<b>Synonyms:</b>	CD169; SIGLEC-1; SN
<b>Summary:</b>	This gene encodes a member of the immunoglobulin superfamily. The encoded protein is a lectin-like adhesion molecule that binds glycoconjugate ligands on cell surfaces in a sialic acid-dependent manner. It is a type I transmembrane protein expressed only by a subpopulation of macrophages and is involved in mediating cell-cell interactions. Alternative splicing produces a transcript variant encoding an isoform that is soluble rather than membrane-bound; however, the full-length nature of this variant has not been determined. [provided by RefSeq, Jul 2008]
<b>Protein Families:</b>	Transmembrane
<b>Protein Pathways:</b>	Cell adhesion molecules (CAMs)

### Product images:



Coomassie blue staining of purified SIGLEC1 protein (Cat# [TP324969]). The protein was produced from HEK293T cells transfected with SIGLEC1 cDNA clone (Cat# [RC224969]) using MegaTran 2.0 (Cat# [TT210002]).