

Product datasheet for **TP324969L**

Sialoadhesin (SIGLEC1) (NM_023068) Human Recombinant Protein

Product data:

Product Type:	Recombinant Proteins
Description:	Recombinant protein of human sialic acid binding Ig-like lectin 1, sialoadhesin (SIGLEC1), 1 mg
Species:	Human
Expression Host:	HEK293T



[View online »](#)

Expression cDNA Clone or AA Sequence: >Peptide sequence encoded by RC224969
 Blue=ORF Red=Cloning site Green=Tag(s)

MGFLPKLLLLASFFPAGQASWGVSSPQDVQGVKGSCLLIPCIFSPADVEVPDGITAIWYYDYSGQRQV
 VSHSADPKLVEARFRGRTEFMGNPEHRVCNLLKDLQPEDSGSYNFRFEISEVNRWSDVKGLTVTTEE
 PRVPTIASPVELLEGTEVDFNCSTPYVCLQEQVRLQWQGDPARSVTFNSQKFPTGVGHLETLHMAMS
 WQDHGRILRCQLSMANHRAQSEIHLQVKYAPRGVKILLSPSGRNILPGLVTLTCQVNSSYPVAVSSIKW
 LKDGVRQLTKTGVLHLPQAAWSDAGVYTCQAENGVGSLVSPPISLHIFMAEVQVSPAGPILENQTVTLV
 CNTPNEAPSDLRYSWYKNHVLEDAHSHTLRLHLATRADTGFYFCEVQNVHGSERSGPPVSWVNHPPPLT
 PVLTAFLAQAGLVGILHCSVSEPLATLVLSHGHHILASTSGDSDHSPRFSGTSGPNSLRLEIRDLEE
 TDSGEYKCSATNSLGNATSTLDFHANAARLLISPAEVEGQAVTLSCRSGLSPTPDARFSWYLNALL
 HEGPGSSLLLPAASSTDAGSYHCRARDGHSASGPSSPAVLTLYPPRQPTFTTRLDLDAAGAGARRGL
 LLCRVDSPPARLQLLHKDRVATSLPSGGGCSTCGGCSPRMKVTKAPNLLRVEIHNPLLEEEGLYLCE
 ASNALGNASTSATFNGQATVLAIPSHLQEGTEANLTCNVSREAAGSPANFSWFRNGVLWAQGPLETV
 TLLPVARTDAALYACRILTEAGAQLSTPVLLSVLYPPDRPKLSALLDMGQGHMALFICTVDSRPLALLA
 LFHGEHLLATSLGPQVPSHGRFQAKAEANSLKLEVRELGLGDSGSYRCEATNVLGSSNTSLFFQVRGAW
 VQVSPPELQEGQAVLSCQVPTGVPEGTSYRWYRDGQPLQESTSATLRFAAITLTQAGAYHCQAQAPG
 SATTSLAVPISLHVSYPRHVTLTTLMDTGPGRLGLLLCRVSDPPAQLRLLHGDRVASTLQGVGGPE
 GSSPRLHVAVAPNTRLEIHGAMLEDEGVYICEASNTLGQASASADFDAQAVNVQVWPVATVREGQLVN
 LTCLVWTHPAQLTYTWYQDQQLDAHSIPLPNVTVRDATSYRCGVGPPGRAPRLSRPITLDVLYAPR
 NLRITYLLESHGGQLALVLCVDSRPPAQLALSHAGRLLASSTAASVPNTRLELRGPQPRDEGFYSCS
 ARSPLGQANTSLELRLEGVRVILAPEAAVPEGAPITVCADPAAHAPTLYTWYHNGRWLQEGPAASLSF
 LVATRAHAGAYSCQAQDAQGTRSSRPAALQVLYAPQDAVLSFRDSRARSMAVIQCTVDEPPAELALS
 HDGKVLATSSGVHSLASGTGHVQVARNALRLQVQDVPAGDDTYVCTAQNLLGSISTIGRLQVEGARVVA
 EPGLDVPEGAALNLSCRLGPGPVGNSTFAFWNDRRRLHAEPVPTLAFTHVARAQAGMYHCLAELPTG
 AAASAPVMLRVLYPPKPTMMVFVEPEGGLRGILDCRVDEPLASLTLHLGSRLVASSQPQGAPAEPI
 HVLASPNALRVDIEALRPSDQGEYICASNVLGSASTSTYFGVRLHRLHQFQQLLWVLGLLVGLLLLL
 LGLGACYTWRRRRVCKQSMGENSVEMAFQKETTQLIDPDAATCETSTCAPPLG
 LEQKLISEEDLAANDILDYKDDDDKV

Recombinant protein using RC224969 also available, [TP324969M](#)

Tag: C-Myc/DDK

Predicted MW: 180.6 kDa

Concentration: >0.05 µg/µL as determined by microplate BCA method

Purity: > 80% as determined by SDS-PAGE and Coomassie blue staining

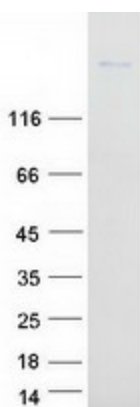
Buffer: 25 mM Tris-HCl, 100 mM glycine, pH 7.3, 10% glycerol

Preparation: Recombinant protein was captured through anti-DDK affinity column followed by conventional chromatography steps.

Note: For testing in cell culture applications, please filter before use. Note that you may experience some loss of protein during the filtration process.

Storage:	Store at -80°C.
Stability:	Stable for 12 months from the date of receipt of the product under proper storage and handling conditions. Avoid repeated freeze-thaw cycles.
RefSeq:	NP_075556
Locus ID:	6614
UniProt ID:	Q9BZZ2
RefSeq Size:	5130
Cytogenetics:	20p13
RefSeq ORF:	5127
Synonyms:	CD169; SIGLEC-1; SN
Summary:	This gene encodes a member of the immunoglobulin superfamily. The encoded protein is a lectin-like adhesion molecule that binds glycoconjugate ligands on cell surfaces in a sialic acid-dependent manner. It is a type I transmembrane protein expressed only by a subpopulation of macrophages and is involved in mediating cell-cell interactions. Alternative splicing produces a transcript variant encoding an isoform that is soluble rather than membrane-bound; however, the full-length nature of this variant has not been determined. [provided by RefSeq, Jul 2008]
Protein Families:	Transmembrane
Protein Pathways:	Cell adhesion molecules (CAMs)

Product images:



Coomassie blue staining of purified SIGLEC1 protein (Cat# [TP324969]). The protein was produced from HEK293T cells transfected with SIGLEC1 cDNA clone (Cat# [RC224969]) using MegaTran 2.0 (Cat# [TT210002]).