

## Product datasheet for **TP324966M**

### **MARS2 (NM\_138395) Human Recombinant Protein**

#### **Product data:**

<b>Product Type:</b>	Recombinant Proteins
<b>Description:</b>	Recombinant protein of human methionyl-tRNA synthetase 2, mitochondrial (MARS2), nuclear gene encoding mitochondrial protein, 100 µg
<b>Species:</b>	Human
<b>Expression Host:</b>	HEK293T
<b>Expression cDNA Clone or AA Sequence:</b>	>RC224966 protein sequence <b>Red</b> =Cloning site <b>Green</b> =Tags(s)

MLRTSVLRLLLGRTGASRLSLLDFGPRYYSSGSLGAGDDACDVRAFFTPPIFYVNAAPHIGHLYSALLAD  
ALCRHRRRLRGPSTAATRFSTGTDEHGLKIQAAATAGLAPTELCDRVSEQFQQLFQEAGISCTDFIRTE  
ARHRVAVQHFVGLKSRGLLYKGVYEGWYCASDECFLEAKVTQQPGPSGDSFPVSLESGHPVSWTKEEN  
YIFRLSQFRKPLQRWLRGNPQAITEPFHHVVLQWLDEELPDLSVSRSSHLHWGIPVPGDDSQTIYVWL  
DALVNYLTVIGYPNAEFKSWWPATSHIIGKDILKFHAIYWPAFLGAGMSPPQRCVHSHWTVCGQKMSK  
SLGNVVDPRTCNLRYTVDGFRYFLLRQGVNWDYDEKVKLLNSELADALGLLNRCTAKRINPSET  
YPAFCTTCFPSEPLVGPVRAQAEDYALVSAVATLPKQVADHYDNFRIYKALEAVSSCVRQTNGFVQRH  
APWKLNWESPVDAPWLGTVLHVALECLRVTLLQPVTPLADKLLSRLGVSASERSLGELYFLPRFYGH  
PCPFEGRRLLGPETGLLPRLDQSRTWLVKAHRT

**TRTRPLEQKLISEEDLAANDILDYKDDDDKV**

<b>Tag:</b>	C-Myc/DDK
<b>Predicted MW:</b>	64.6 kDa
<b>Concentration:</b>	>0.05 µg/µL as determined by microplate BCA method
<b>Purity:</b>	> 80% as determined by SDS-PAGE and Coomassie blue staining
<b>Buffer:</b>	25 mM Tris-HCl, 100 mM glycine, pH 7.3, 10% glycerol
<b>Preparation:</b>	Recombinant protein was captured through anti-DDK affinity column followed by conventional chromatography steps.
<b>Note:</b>	For testing in cell culture applications, please filter before use. Note that you may experience some loss of protein during the filtration process.
<b>Storage:</b>	Store at -80°C.



[View online »](#)

**Stability:** Stable for 12 months from the date of receipt of the product under proper storage and handling conditions. Avoid repeated freeze-thaw cycles.

**RefSeq:** [NP\\_612404](#)

**Locus ID:** 92935

**UniProt ID:** [Q96GW9](#)

**RefSeq Size:** 3102

**Cytogenetics:** 2q33.1

**RefSeq ORF:** 1779

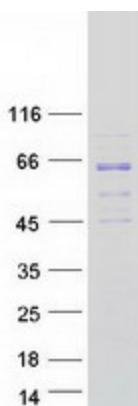
**Synonyms:** COXPD25; MetRS; mtMetRS

**Summary:** This gene produces a mitochondrial methionyl-tRNA synthetase protein that is encoded by the nuclear genome and imported to the mitochondrion. This protein likely functions as a monomer and is predicted to localize to the mitochondrial matrix. Mutations in this gene are associated with the autosomal recessive neurodegenerative disease spastic ataxia-3 (SPAX3). [provided by RefSeq, Apr 2014]

**Protein Families:** Druggable Genome

**Protein Pathways:** Aminoacyl-tRNA biosynthesis, Selenoamino acid metabolism

### Product images:



Coomassie blue staining of purified MARS2 protein (Cat# [TP324966]). The protein was produced from HEK293T cells transfected with MARS2 cDNA clone (Cat# [RC224966]) using MegaTran 2.0 (Cat# [TT210002]).