

Product datasheet for TP324966L

MARS2 (NM_138395) Human Recombinant Protein

Product data:

Product Type:	Recombinant Proteins
Description:	Recombinant protein of human methionyl-tRNA synthetase 2, mitochondrial (MARS2), nuclear gene encoding mitochondrial protein, 1 mg
Species:	Human
Expression Host:	HEK293T
Expression cDNA Clone or AA Sequence:	>RC224966 protein sequence Red=Cloning site Green=Tags(s)

MLRTSVLRLLLGRTGASRLSLLDFGPRYYSSGSL SAGDDACDVRA YFTTPIFVNAAPHIGHLYSALLAD
ALCRHRRLRGPSTAATRFSTGTDEHGLKIQQAATAGLAPTELCDRVSEQFQQLFQEAGISCTDFIRTTT
ARHRVAVQHFVGVLKSRGLLYKGVYEGWYCASDECFLEAKVTQQPGPSGDSPVSVLES GHPVSWTKEEN
YIFRLSQFRKPLQRWLRGNPQAITPEPFHHVVLQWLDEELPDLSVSRSSHLHWGIPVPGDDSDTIYVWL
DALVNYLTVIGYPNAEFKSWWPATSHIIGKDILKFHAIYWPAFLLGAGMSPPQRCVHSHWTVCGQKMSK
SLGNVVDPR TCLNRYTVDGFRYFLLRQGVPNWDCDYDEKVKLLNSELADALGLLNRCTAKRINPSET
YPAFCTTCFPSEPLVGPVRAQAEDYALVSAVATLPKQVADHYDNFRIYKALEAVSSCVRQTNGFVQRH
APWKLNWESPVDAPWLGTVLHVALECLR VFGTLLQPVTPLADKLLSRLGVSASERSLGELYFLPRFYGH
PCPFEGRRLLGPETGLLPRLDQSRTWL VKAHR T

TRTRPLEQKLISEEDLAANDILDYKDDDDKV

Tag:	C-Myc/DDK
Predicted MW:	64.6 kDa
Concentration:	>0.05 µg/µL as determined by microplate BCA method
Purity:	> 80% as determined by SDS-PAGE and Coomassie blue staining
Buffer:	25 mM Tris-HCl, 100 mM glycine, pH 7.3, 10% glycerol
Preparation:	Recombinant protein was captured through anti-DDK affinity column followed by conventional chromatography steps.
Note:	For testing in cell culture applications, please filter before use. Note that you may experience some loss of protein during the filtration process.
Storage:	Store at -80°C.



[View online »](#)

Stability: Stable for 12 months from the date of receipt of the product under proper storage and handling conditions. Avoid repeated freeze-thaw cycles.

RefSeq: [NP_612404](#)

Locus ID: 92935

UniProt ID: [Q96GW9](#)

RefSeq Size: 3102

Cytogenetics: 2q33.1

RefSeq ORF: 1779

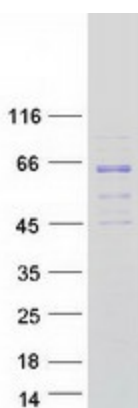
Synonyms: COXPD25; MetRS; mtMetRS

Summary: This gene produces a mitochondrial methionyl-tRNA synthetase protein that is encoded by the nuclear genome and imported to the mitochondrion. This protein likely functions as a monomer and is predicted to localize to the mitochondrial matrix. Mutations in this gene are associated with the autosomal recessive neurodegenerative disease spastic ataxia-3 (SPAX3). [provided by RefSeq, Apr 2014]

Protein Families: Druggable Genome

Protein Pathways: Aminoacyl-tRNA biosynthesis, Selenoamino acid metabolism

Product images:



Coomassie blue staining of purified MARS2 protein (Cat# [TP324966]). The protein was produced from HEK293T cells transfected with MARS2 cDNA clone (Cat# [RC224966]) using MegaTran 2.0 (Cat# [TT210002]).