

Product datasheet for **TP324946M**

Keratin 12 (KRT12) (NM_000223) Human Recombinant Protein

Product data:

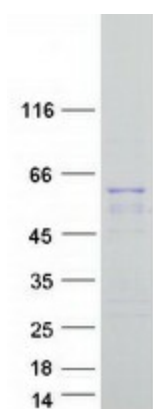
Product Type:	Recombinant Proteins
Description:	Recombinant protein of human keratin 12 (KRT12), 100 µg
Species:	Human
Expression Host:	HEK293T
Expression cDNA Clone or AA Sequence:	>RC224946 representing NM_000223 Red =Cloning site Green =Tags(s) MDLSNNTMSLSVRTPGLSRRLSSQSVIGRPRGMSASSVGSYGGSAFGFGASC GGGFSAASMFGSSSGFG GGSGSSMAGGLGAGYGRALGGGSGGLGMGFGGSPGGGSLGILSGNDGLLSGSEKTMQNLNDRLASYL DKVRALEEANTELENKIREWYETRGTGTADASQSDYSKYPLIEDLRNKIISASIGNAQLLLQIDNARLA AEDFRMKYENELALRQGV EADINGLRRVLDLTLTRTDLEMQIESLNEELAYMKNHEDELQSFVGGPG EVSVEMDAAPGVDLTRLN DMRAQYETIAEQNRKDAEAWFIEKSGELRKEISTNTEQLQSSKSEVTDLRR AFQNLEIELQSQLAMKKSLEDSLAEAGDYCAQLSQVQQLISNLEAQLLQVRADAERQNV DHQRLLN VKA RLELEIETYRRLLDGEAQGDGLEESLFVTD SKSQAQSTDSSKDP TKR KIKTVVQEMVNGEVVSSQVQEI EELM TRTRPLEQKLISEEDLAANDILDYKDDDDKV
Tag:	C-Myc/DDK
Predicted MW:	53.3 kDa
Concentration:	>0.05 µg/µL as determined by microplate BCA method
Purity:	> 80% as determined by SDS-PAGE and Coomassie blue staining
Buffer:	25 mM Tris-HCl, 100 mM glycine, pH 7.3, 10% glycerol
Preparation:	Recombinant protein was captured through anti-DDK affinity column followed by conventional chromatography steps.
Note:	For testing in cell culture applications, please filter before use. Note that you may experience some loss of protein during the filtration process.
Storage:	Store at -80°C.
Stability:	Stable for 12 months from the date of receipt of the product under proper storage and handling conditions. Avoid repeated freeze-thaw cycles.



[View online »](#)

RefSeq:	NP_000214
Locus ID:	3859
UniProt ID:	Q99456
RefSeq Size:	1867
Cytogenetics:	17q21.2
RefSeq ORF:	1482
Synonyms:	K12; MECD1
Summary:	KRT12 encodes the type I intermediate filament chain keratin 12, expressed in corneal epithelia. Mutations in this gene lead to Meesmann corneal dystrophy. [provided by RefSeq, Jul 2008]

Product images:



Coomassie blue staining of purified KRT12 protein (Cat# [TP324946]). The protein was produced from HEK293T cells transfected with KRT12 cDNA clone (Cat# [RC224946]) using MegaTran 2.0 (Cat# [TT210002]).