

## Product datasheet for **TP324946L**

### Keratin 12 (KRT12) (NM\_000223) Human Recombinant Protein

#### Product data:

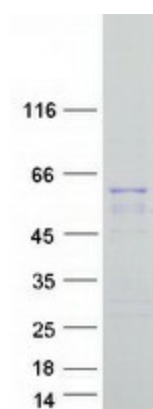
Product Type:	Recombinant Proteins
Description:	Recombinant protein of human keratin 12 (KRT12), 1 mg
Species:	Human
Expression Host:	HEK293T
Expression cDNA Clone or AA Sequence:	>RC224946 representing NM_000223 <b>Red</b> =Cloning site <b>Green</b> =Tags(s)  MDLSNNTMSLSVRTPGLSRRLSSQSVIGRPRGMSASSVSGSYGGSAFGFGASC GGGGFS AASMFGSSSGFG GGSGSSMAGGLGAGYGRALGGGSGGLGMGFGGSPGGGSLGILSGNDGLLSGSEKETMQNLNDRLASYL DKVRALEEANTELENKIREWYETRGTGTADASQSDYSKYPLIEDLRNKIISASIGNAQLLLQIDNARLA AEDFRMKYENELALRQGVEADINGLRRVLDLTLTRTDLEMQIESLNEELAYMKKNHEDELQSFVGGPG EVSVEMDAAPGVDLTRLNLMRAQYETIAEQNRKDAEAWFIEKSGELRKEISTNTEQLQSSKSEVTDLRR AFQNLEIELQSQLAMKKSLEDSLAEAGDYCAQLSQVQQLISNLEAQLLQVRADAERQNVDHQRLNKA RLELEIETYRRLLDGEAQGDGLEESLFVTDSSKSAQSTDSSKDPKTRKIKTVVQEMVNGEVVSSQVQEI EELM  <b>TRTRPLEQKLISEEDLAANDILDYKDDDDKV</b>
Tag:	C-Myc/DDK
Predicted MW:	53.3 kDa
Concentration:	>0.05 µg/µL as determined by microplate BCA method
Purity:	> 80% as determined by SDS-PAGE and Coomassie blue staining
Buffer:	25 mM Tris-HCl, 100 mM glycine, pH 7.3, 10% glycerol
Preparation:	Recombinant protein was captured through anti-DDK affinity column followed by conventional chromatography steps.
Note:	For testing in cell culture applications, please filter before use. Note that you may experience some loss of protein during the filtration process.
Storage:	Store at -80°C.
Stability:	Stable for 12 months from the date of receipt of the product under proper storage and handling conditions. Avoid repeated freeze-thaw cycles.



[View online »](#)

RefSeq:	<a href="#">NP_000214</a>
Locus ID:	3859
UniProt ID:	<a href="#">Q99456</a>
RefSeq Size:	1867
Cytogenetics:	17q21.2
RefSeq ORF:	1482
Synonyms:	K12; MECD1
Summary:	KRT12 encodes the type I intermediate filament chain keratin 12, expressed in corneal epithelia. Mutations in this gene lead to Meesmann corneal dystrophy. [provided by RefSeq, Jul 2008]

### Product images:



Coomassie blue staining of purified KRT12 protein (Cat# [TP324946]). The protein was produced from HEK293T cells transfected with KRT12 cDNA clone (Cat# [RC224946]) using MegaTran 2.0 (Cat# [TT210002]).