

Product datasheet for TP324917L

CDKAL1 (NM_017774) Human Recombinant Protein

Product data:

Product Type:	Recombinant Proteins
Description:	Recombinant protein of human CDK5 regulatory subunit associated protein 1-like 1 (CDKAL1), 1 mg
Species:	Human
Expression Host:	HEK293T
Expression cDNA Clone or AA Sequence:	>RC224917 protein sequence Red =Cloning site Green =Tags(s)

MPSASCDTLLDDIEDIVSQEDSKPQDRHFVRKDVVPKVRRRNTQKYLQEEENSPPSDSTIPGIQKIWIRT
WGCSHNNSDGEYMAGQLAAYGYKITENASDADLWLLNSCTVKNPAEDHFRNSIKKAQEENKKIVLAGCVP
QAQPRQDYKGLSIIGVQQIDRVVEVEETIKGHSVRLGQKKNRRLGGARLDLPKIRKNPLIEISI
NTGCLNACTYCKTKHARGNLASYPIDELVDRAKQSFQEGVCEIWLTS EDTGAYGRDIGTNLPTLLWKLVE
VIPEGAMLRLGMTNPPYILEHLEEMAKILNHPRVYAFHLPVQSASDSVLMEMKREYCVADFKRVVDFLK
EKVPGITAIIDIICGFPGETDQDFQETVKLVVEEYKFPSLFINQFYPRPGTPAAKMEQVPAQVKKQRTKDL
SRVFHSYSPYDHKIGERQQVLVTEESFDSKFYVAHNQFYEQVLVPKNPAFMGKMVEVDIYESGKHFMMKGQ
PVSDAKVYTPSISKPLAKGEVSGLTKDFRNGLGNQLSSGSHTSAASQCDSASSRMVLPMPRLHQDCALRM
SVGLALLGLLFAFFVKVYN

TRTRPLEQKLISEEDLAANDILDYKDDDDKV

Tag:	C-Myc/DDK
Predicted MW:	64.9 kDa
Concentration:	>0.05 µg/µL as determined by microplate BCA method
Purity:	> 80% as determined by SDS-PAGE and Coomassie blue staining
Buffer:	25 mM Tris-HCl, 100 mM glycine, pH 7.3, 10% glycerol
Preparation:	Recombinant protein was captured through anti-DDK affinity column followed by conventional chromatography steps.
Note:	For testing in cell culture applications, please filter before use. Note that you may experience some loss of protein during the filtration process.
Storage:	Store at -80°C.



[View online >](#)

Stability: Stable for 12 months from the date of receipt of the product under proper storage and handling conditions. Avoid repeated freeze-thaw cycles.

RefSeq: [NP_060244](#)

Locus ID: 54901

UniProt ID: [Q5VV42](#)

RefSeq Size: 3272

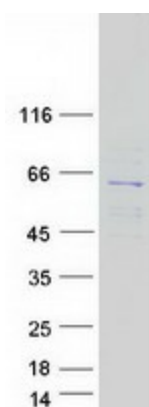
Cytogenetics: 6p22.3

RefSeq ORF: 1737

Summary: The protein encoded by this gene is a member of the methylthiotransferase family. The function of this gene is not known. Genome-wide association studies have linked single nucleotide polymorphisms in an intron of this gene with susceptibility to type 2 diabetes. [provided by RefSeq, May 2010]

Protein Families: Transmembrane

Product images:



Coomassie blue staining of purified CDKAL1 protein (Cat# [TP324917]). The protein was produced from HEK293T cells transfected with CDKAL1 cDNA clone (Cat# [RC224917]) using MegaTran 2.0 (Cat# [TT210002]).