

## Product datasheet for **TP324906L**

### **MAGEB1 (NM\_177404) Human Recombinant Protein**

#### Product data:

Product Type:	Recombinant Proteins
Description:	Recombinant protein of human melanoma antigen family B, 1 (MAGEB1), transcript variant 2, 1 mg
Species:	Human
Expression Host:	HEK293T
Expression cDNA Clone or AA Sequence:	>Peptide sequence encoded by RC224906 Blue=ORF Red=Cloning site Green=Tag(s)

MPRGQKSKLRAREKRRKAREETQGLKVAHATAAEKEECPSSSPVLGDTPTSSPAAGIPQKPQGAPPTT  
AAAAVSCTESDEGAKCQGEENASFSQATTSTESSVKDPVAWEAGMLMHFILRKYKMREPIMKADMLKVV  
DEKYKDHFTTEILNGASRRLELVFGLDLKEDNPSGHTYTLVSKLNLNDGNLSNDWDFPRNGLLMPLLGV  
IFLKGNSATEEEIWKFMNVLGAYDGEELIYGEPRKFITQDLVQEKYLKYEQVPNSDPPRYQFLWGPRA  
YAETTKMKVLEFLAKMNGATPRDFPSHYEALRDEEERAQVRSSVRARRRTTATFRARSRAPFSRSSH  
PM  
TRTRPLEQKLISEEDLAANDILDYKDDDDKV

Recombinant protein using RC224906 also available, [TP324906](#)

Tag:	C-Myc/DDK
Predicted MW:	38.9 kDa
Concentration:	>0.05 µg/µL as determined by microplate BCA method
Purity:	> 80% as determined by SDS-PAGE and Coomassie blue staining
Buffer:	25 mM Tris-HCl, 100 mM glycine, pH 7.3, 10% glycerol
Preparation:	Recombinant protein was captured through anti-DDK affinity column followed by conventional chromatography steps.
Note:	For testing in cell culture applications, please filter before use. Note that you may experience some loss of protein during the filtration process.
Storage:	Store at -80°C.
Stability:	Stable for 12 months from the date of receipt of the product under proper storage and handling conditions. Avoid repeated freeze-thaw cycles.

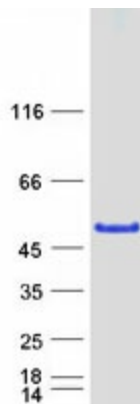


[View online »](#)

RefSeq:	<a href="#">NP_796379</a>
Locus ID:	4112
UniProt ID:	<a href="#">P43366</a>
RefSeq Size:	1708
Cytogenetics:	Xp21.2
RefSeq ORF:	1041
Synonyms:	CT3.1; DAM10; MAGE-Xp; MAGEL1

**Summary:** This gene is a member of the MAGEB gene family. The members of this family have their entire coding sequences located in the last exon, and the encoded proteins show 50 to 68% sequence identity to each other. The promoters and first exons of the MAGEB genes show considerable variability, suggesting that the existence of this gene family enables the same function to be expressed under different transcriptional controls. This gene is localized in the DSS (dosage-sensitive sex reversal) critical region, and expressed in testis and in a significant fraction of tumors of various histological types. This gene and other MAGEB members are clustered on chromosome Xp22-p21. Multiple alternatively spliced transcript variants encoding the same protein have been found for this gene, however, the full length nature of some variants has not been defined. [provided by RefSeq, Jul 2008]

### Product images:



Coomassie blue staining of purified MAGEB1 protein (Cat# [TP324906]). The protein was produced from HEK293T cells transfected with MAGEB1 cDNA clone (Cat# [RC224906]) using MegaTran 2.0 (Cat# [TT210002]).