

Product datasheet for **TP324896L**

ICEBERG (CARD18) (NM_021571) Human Recombinant Protein

Product data:

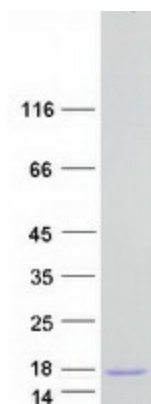
Product Type:	Recombinant Proteins
Description:	Recombinant protein of human caspase recruitment domain family, member 18 (CARD18), 1 mg
Species:	Human
Expression Host:	HEK293T
Expression cDNA Clone or AA Sequence:	>RC224896 representing NM_021571 Red =Cloning site Green =Tags(s)
	MADQLLRKKRRIFIHSVGAGTINALDCLLEDEVISQEDMNVKVRDENDTVMDKARVLIDLVTGKGPCKSCC KFIKHLCEEDPQLASKMGLH
	TR TRPLEQKLISEEDLAANDILDYKDDDDKV
Tag:	C-Myc/DDK
Predicted MW:	10 kDa
Concentration:	>0.05 µg/µL as determined by microplate BCA method
Purity:	> 80% as determined by SDS-PAGE and Coomassie blue staining
Buffer:	25 mM Tris-HCl, 100 mM glycine, pH 7.3, 10% glycerol
Preparation:	Recombinant protein was captured through anti-DDK affinity column followed by conventional chromatography steps.
Note:	For testing in cell culture applications, please filter before use. Note that you may experience some loss of protein during the filtration process.
Storage:	Store at -80°C.
Stability:	Stable for 12 months from the date of receipt of the product under proper storage and handling conditions. Avoid repeated freeze-thaw cycles.
RefSeq:	NP_067546
Locus ID:	59082
UniProt ID:	P57730
RefSeq Size:	431



[View online »](#)

Cytogenetics:	11q22.3
RefSeq ORF:	270
Synonyms:	ICEBERG; pseudo-ICE; UNQ5804
Summary:	Inhibits generation of IL-1-beta by interacting with caspase-1 and preventing its association with RIP2. Down-regulates the release of IL1B.[UniProtKB/Swiss-Prot Function]
Protein Families:	Druggable Genome
Protein Pathways:	NOD-like receptor signaling pathway

Product images:



Coomassie blue staining of purified CARD18 protein (Cat# [TP324896]). The protein was produced from HEK293T cells transfected with CARD18 cDNA clone (Cat# [RC224896]) using MegaTran 2.0 (Cat# [TT210002]).