

## Product datasheet for TP324832L

### LRR43 (NM\_001098519) Human Recombinant Protein

#### Product data:

Product Type:	Recombinant Proteins
Description:	Recombinant protein of human leucine rich repeat containing 43 (LRR43), transcript variant 1, 1 mg
Species:	Human
Expression Host:	HEK293T
Expression cDNA Clone or AA Sequence:	>RC224832 representing NM_001098519 Red=Cloning site Green=Tags(s)

MEASYESESESESEAGPGTQRP GTVSAAVREHLRKLCLREFPCGAGSWNKS RFLPQ TWRTWRELVPRE  
EDVSPGEETVEALLGLVRSRHSPWALLNNSNAEDSFLRELAIRNPLTITDFFYSYFRSLRVIDKKVTL  
VDKDLLKFLKLEELVLSANRIKEVDATNLPPTLKVLELYGNEISSMECLCAHPPAGLQHLGLGHNKLLGP  
LESlyVTANHWP NLVSLDLGFNDLTDLQSMVTSRLRLHLRLV LQGNPLALVPYYRGLTIDSLAQLCVL  
DDITVSPNEKHLFRGLSLNGDLLAQEAQFVWTIGNIRGVLDTSVLDPEPRPEGPFITYNYVYDFVKDE  
EGEMNESAGVLA EIVKPSPSLELLVEESPEEVVEDVIEDIVEEVTEEEVGSLESEVEESGESELSVISGP  
STILQMPRASAEELAKLRLRIDPRLCPSPGTVLFSTAHKPWAEVIPCSYEMQHSLRDLVPLKAFLLAGTT  
VTIVEEKILSWPVLP AVDSPLSAKKGKGEKDKKGEKDR TGKGEKEPAKEWKVLKKKKEPKELRQDPP  
ILQVLGRGLVILEPLLAGEPLVSTVCNFGVWRTLTS DRTLARDSKKIKKVAKKEPKAVIPIYEGDYHP  
EPLTVEVQIQLNQCRSAEEALRMFAV

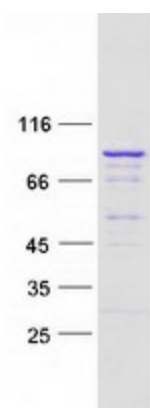
TRTRPLEQKLISEEDLAANDILDYKDDDDKV

Tag:	C-Myc/DDK
Predicted MW:	72.8 kDa
Concentration:	>0.05 µg/µL as determined by microplate BCA method
Purity:	> 80% as determined by SDS-PAGE and Coomassie blue staining
Buffer:	25 mM Tris-HCl, 100 mM glycine, pH 7.3, 10% glycerol
Preparation:	Recombinant protein was captured through anti-DDK affinity column followed by conventional chromatography steps.
Note:	For testing in cell culture applications, please filter before use. Note that you may experience some loss of protein during the filtration process.
Storage:	Store at -80°C.



[View online »](#)

Stability:	Stable for 12 months from the date of receipt of the product under proper storage and handling conditions. Avoid repeated freeze-thaw cycles.
RefSeq:	<u>NP_001091989</u>
Locus ID:	254050
UniProt ID:	<u>Q8N309</u>
RefSeq Size:	2045
Cytogenetics:	12q24.31
RefSeq ORF:	1968

**Product images:**

Coomassie blue staining of purified LRRC43 protein (Cat# [TP324832]). The protein was produced from HEK293T cells transfected with LRRC43 cDNA clone (Cat# [RC224832]) using MegaTran 2.0 (Cat# [TT210002]).