

## Product datasheet for **TP324816M**

### **WNT8A (NM\_058244) Human Recombinant Protein**

#### **Product data:**

<b>Product Type:</b>	Recombinant Proteins
<b>Description:</b>	Recombinant protein of human wingless-type MMTV integration site family, member 8A (WNT8A), 100 µg
<b>Species:</b>	Human
<b>Expression Host:</b>	HEK293T
<b>Expression cDNA Clone or AA Sequence:</b>	>RC224816 representing NM_058244 <b>Red</b> =Cloning site <b>Green</b> =Tags(s)  MGNLFMLWAALGICCAAFSASAWSVNNFLITGPKAYLTYTTSVALGAQSGIEECKFQFAWERWNCPENAL QLSTHNRLRSATRETSFIHAISSAGVMYIITKNCSMGDFENCGCDGSNNGKTGGHGWIWGGCDNVEFGE RISKLFVDSLEKGDARALMNLHNNRAGRLAVRATMKRTCKCHGISGSCSIQTCWLQLAEFREMGDYLKA KYDQALKIEMDKRQLRAGNSAEGHWVPAEAFPSAEAELEESPDYCTCNSSLGIYGTEGRECLQNSH NTSRWERRSCGRLCTEGLQVEERKTEVISSCNCKFQWCCTVKCDQCRHVWSKYCARSPGSAQSLGKGS A  <b>TRTRPLEQKLISEEDLAANDILDYKDDDDKV</b>
<b>Tag:</b>	C-Myc/DDK
<b>Predicted MW:</b>	38.7 kDa
<b>Concentration:</b>	>0.05 µg/µL as determined by microplate BCA method
<b>Purity:</b>	> 80% as determined by SDS-PAGE and Coomassie blue staining
<b>Buffer:</b>	25 mM Tris-HCl, 100 mM glycine, pH 7.3, 10% glycerol
<b>Preparation:</b>	Recombinant protein was captured through anti-DDK affinity column followed by conventional chromatography steps.
<b>Note:</b>	For testing in cell culture applications, please filter before use. Note that you may experience some loss of protein during the filtration process.
<b>Storage:</b>	Store at -80°C.
<b>Stability:</b>	Stable for 12 months from the date of receipt of the product under proper storage and handling conditions. Avoid repeated freeze-thaw cycles.
<b>RefSeq:</b>	<u><a href="#">NP_490645</a></u>



[View online »](#)

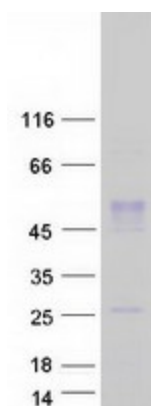
Locus ID: 7478  
UniProt ID: [Q9H1J5](#)  
RefSeq Size: 1899  
Cytogenetics: 5q31.2  
RefSeq ORF: 1053  
Synonyms: WNT8D

**Summary:** The WNT gene family consists of structurally related genes which encode secreted signaling proteins. These proteins have been implicated in oncogenesis and in several developmental processes, including regulation of cell fate and patterning during embryogenesis. This gene is a member of the WNT gene family, and may be implicated in development of early embryos as well as germ cell tumors. Multiple alternatively spliced transcript variants have been found for this gene. [provided by RefSeq, Jul 2014]

**Protein Families:** Cancer stem cells, ES Cell Differentiation/IPS, Induced pluripotent stem cells, Secreted Protein, Stem cell relevant signaling - Wnt Signaling pathway

**Protein Pathways:** Basal cell carcinoma, Hedgehog signaling pathway, Melanogenesis, Pathways in cancer, Wnt signaling pathway

### Product images:



Coomassie blue staining of purified WNT8A protein (Cat# [TP324816]). The protein was produced from HEK293T cells transfected with WNT8A cDNA clone (Cat# [RC224816]) using MegaTran 2.0 (Cat# [TT210002]).