

## Product datasheet for TP324808M

### SCP1 (SYCP1) (NM\_003176) Human Recombinant Protein

#### Product data:

Product Type:	Recombinant Proteins
Description:	Recombinant protein of human synaptonemal complex protein 1 (SYCP1), 100 µg
Species:	Human
Expression Host:	HEK293T
Expression cDNA Clone or AA Sequence:	>RC224808 protein sequence Red=Cloning site Green=Tags(s)

MEKQKPFALFVPPRSSSSQVSAVKPQTLGGDSTFFKSFNKCTEDDFEFPFAKTNLSKNGENIDSDPALQK  
VNFLPVLEQVGNSDCHYQEGLKDSLENSEGLSRVYSKLYKEAEKIKKWKVSTEAELRQKESKLQENRKI  
IEAQRKAIQELQFGNEKVSLEEGIQENKDLIKENNATRHLNLLKETCARSAEKTKKYEYEREETRQV  
YMDLNNNIEKMITAFEELRVQAENSRLMHFKLKEDYEKIQHLEQYKKEINDKEKQVSLLLIQITEKEN  
KMKDLTFLLEESRDKNVQLEEKTKLQSENKQSIKQHHLTKELEDIKVSLQRSVSTQKALEEDLQIATK  
TICQLTEEKETQMEESNKARAAHSFVTEFETTVCSEELLRTEQQRLEKNEDQLKILTMELQKKSSELE  
EMTKLTNNKEVELEELKKVLGEKETLLYENKQFEKIAEELKGTQELIGLLQAREKEVHDLEIQLTAITT  
SEQYYSKEVKDLKTELENEKLNTELTSHCNKLSENKELTQETSDMTLELNQQEDINNNKKQEERMLK  
QIENLQETETQLRNELEYVREELKQKRDEVKCKLDKSEENCNNLRKQVENKNKYIEELQQENKALKKKGT  
AESKQLNVYEIKVKNLELESAKQKFGTEITDYQKEIEDKKISEENLLEVEKAKVIADAVKLQKEID  
KRCQHKAEMVALMEKHKHQYDKIIEERDSELGLYKSKEQEQQSSLRASLEIELSNLKAELLSVKKQLEIE  
REEKEKLRKAKENTATLKEKDKKTQTFLEETPEIYWKLDSKAVPSQTVSRNFTSVDHGISKDKRDYLW  
TSAKNTLSTPLPKAYTVKTPKPKLQQRENLNPIEESKKRKMMAFEFDINSDESSETDLLSMVSEETL  
KTLYRNNPPASHLCVKTPKKAPSSLTPGSTLKFKAIRKMREDRWAVIAKMDRKKKLKEAEKLFV

TRTRPLEQKLISEEDLAANDILDYKDDDDKV

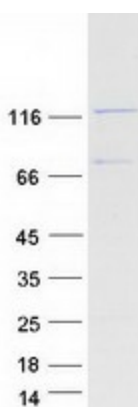
Tag:	C-Myc/DDK
Predicted MW:	114 kDa
Concentration:	>0.05 µg/µL as determined by microplate BCA method
Purity:	> 80% as determined by SDS-PAGE and Coomassie blue staining
Buffer:	25 mM Tris-HCl, 100 mM glycine, pH 7.3, 10% glycerol
Preparation:	Recombinant protein was captured through anti-DDK affinity column followed by conventional chromatography steps.



[View online »](#)

<b>Note:</b>	For testing in cell culture applications, please filter before use. Note that you may experience some loss of protein during the filtration process.
<b>Storage:</b>	Store at -80°C.
<b>Stability:</b>	Stable for 12 months from the date of receipt of the product under proper storage and handling conditions. Avoid repeated freeze-thaw cycles.
<b>RefSeq:</b>	<a href="#">NP_003167</a>
<b>Locus ID:</b>	6847
<b>UniProt ID:</b>	<a href="#">Q15431</a> , <a href="#">A0A024R012</a>
<b>RefSeq Size:</b>	3529
<b>Cytogenetics:</b>	1p13.2
<b>RefSeq ORF:</b>	2928
<b>Synonyms:</b>	CT8; HOM-TES-14; SCP-1; SCP1
<b>Summary:</b>	Major component of the transverse filaments of synaptonemal complexes, formed between homologous chromosomes during meiotic prophase. Required for normal assembly of the central element of the synaptonemal complexes. Required for normal centromere pairing during meiosis. Required for normal meiotic chromosome synapsis during oocyte and spermatocyte development and for normal male and female fertility.[UniProtKB/Swiss-Prot Function]

### Product images:



Coomassie blue staining of purified SYCP1 protein (Cat# [TP324808]). The protein was produced from HEK293T cells transfected with SYCP1 cDNA clone (Cat# [RC224808]) using MegaTran 2.0 (Cat# [TT210002]).