

Product datasheet for TP324808L

SCP1 (SYCP1) (NM_003176) Human Recombinant Protein

Product data:

Product Type:	Recombinant Proteins
Description:	Recombinant protein of human synaptonemal complex protein 1 (SYCP1), 1 mg
Species:	Human
Expression Host:	HEK293T
Expression cDNA Clone or AA Sequence:	>RC224808 protein sequence Red=Cloning site Green=Tags(s)

MEKQKPFALFVPPRSSSSQVSAVKPQTLGGDSTFFKSFNKCTEDDFEFPFAKTNLSKNGENIDSDPALQK
VNFLPVLEQVGNSDCHYQEGLKDSLENSEGLSRVYSKLYKEAEKIKKWKVSTEAELRQKESKLQENRKI
IEAQRKAIQELQFGNEKVSLEEGIQENKDLIKENNATRHLNLLKETCARSAEKTKKYEYEREETRQV
YMDLNNNIEKMITAFEELRVQAENSRLMHFKLKEDYEKIQHLEQYKKEINDKEKQVSLLLIQITEKEN
KMKDLTFLLEESRDKNVQLEEKTKLQSENKQSIKQHHLTKELEDIKVSLQRSVSTQKALEEDLQIATK
TICQLTEEKETQMEESNKARAAHSFVTFEFTTVCSLEELLRTEQQRLEKNEDQLKILTMELQKKSSELE
EMTKLTNNKEVELEELKKVLGEKETLLYENKQFEKIAEELKGTQELIGLLQAREKEVHDLEIQLTAIT
SEQYYSKEVKDLKTELENEKLNTELTSHCNKLSENKELTQETSDMTLELNQQEDINNNKKQEERMLK
QIENLQETETQLRNELEYVREELKQKRDEVKCKLDKSEENCNNLRKQVENKNKYIEELQQENKALKKKGT
AESKQLNVYEIKVKNLELESAKQKFGFITDYQKEIEDKKISEENLLEEVEKAKVIADAVKLQKEID
KRCQHKAEMVALMEKHKHQYDKIIEERDSELGLYKSKEQEQQSSLRASLEIELSNLKAELLSVKKQLEIE
REEKEKLRKAKENTATLKEKDKKTQTFLEETPEIYWKLDSKAVPSQTVSRNFTSVDHGISKDKRDYLW
TSAKNTLSTPLPKAYTVKTPKPKLQQRENLNPIEESKKRKMFAFEFDINSDESSETDLLSMVSEETL
KTLYRNNPPASHLCVKTPKKAPSSLTPGSTLKFKAIRKMRDRWAVIAKMDRKKKLKEAEKLFV

TRTRPLEQKLISEEDLAANDILDYKDDDDKV

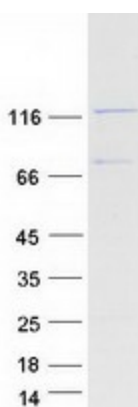
Tag:	C-Myc/DDK
Predicted MW:	114 kDa
Concentration:	>0.05 µg/µL as determined by microplate BCA method
Purity:	> 80% as determined by SDS-PAGE and Coomassie blue staining
Buffer:	25 mM Tris-HCl, 100 mM glycine, pH 7.3, 10% glycerol
Preparation:	Recombinant protein was captured through anti-DDK affinity column followed by conventional chromatography steps.



[View online »](#)

Note:	For testing in cell culture applications, please filter before use. Note that you may experience some loss of protein during the filtration process.
Storage:	Store at -80°C.
Stability:	Stable for 12 months from the date of receipt of the product under proper storage and handling conditions. Avoid repeated freeze-thaw cycles.
RefSeq:	NP_003167
Locus ID:	6847
UniProt ID:	Q15431 , A0A024R012
RefSeq Size:	3529
Cytogenetics:	1p13.2
RefSeq ORF:	2928
Synonyms:	CT8; HOM-TES-14; SCP-1; SCP1
Summary:	Major component of the transverse filaments of synaptonemal complexes, formed between homologous chromosomes during meiotic prophase. Required for normal assembly of the central element of the synaptonemal complexes. Required for normal centromere pairing during meiosis. Required for normal meiotic chromosome synapsis during oocyte and spermatocyte development and for normal male and female fertility.[UniProtKB/Swiss-Prot Function]

Product images:



Coomassie blue staining of purified SYCP1 protein (Cat# [TP324808]). The protein was produced from HEK293T cells transfected with SYCP1 cDNA clone (Cat# [RC224808]) using MegaTran 2.0 (Cat# [TT210002]).