

Product datasheet for **TP324784M**

IL36 gamma (IL36G) (NM_019618) Human Recombinant Protein

Product data:

Product Type: Recombinant Proteins

Description: Recombinant protein of human interleukin 1 family, member 9 (IL1F9), 100 µg

Species: Human

Expression Host: HEK293T

**Expression cDNA Clone
or AA Sequence:** >RC224784 protein sequence
Red=Cloning site **Green**=Tags(s)

MRGTPGDADGGGRAVYQSMCKPITGTINDLNQQVWTLQGQNLVAVPRSDSVTPVTVAVITCKYPEALEQG
RGDPYILGIQNPEMCLYCEKVGEPQLQLKEQKIMDLYGQPEPVKPFIFYRAKTGRTSTLESVAFPDWF
ASSKRDQPIILTSELGKSYNTAFELNIND

TRTRPLEQKLISEEDLAANDILDYKDDDDKV

Tag: C-Myc/DDK

Predicted MW: 18.5 kDa

Concentration: >0.05 µg/µL as determined by microplate BCA method

Purity: > 80% as determined by SDS-PAGE and Coomassie blue staining

Buffer: 25 mM Tris-HCl, 100 mM glycine, pH 7.3, 10% glycerol

Preparation: Recombinant protein was captured through anti-DDK affinity column followed by conventional chromatography steps.

Note: For testing in cell culture applications, please filter before use. Note that you may experience some loss of protein during the filtration process.

Storage: Store at -80°C.

Stability: Stable for 12 months from the date of receipt of the product under proper storage and handling conditions. Avoid repeated freeze-thaw cycles.

RefSeq: [NP_062564](#)

Locus ID: 56300

UniProt ID: [Q9NZH8](#)

RefSeq Size: 1212



[View online »](#)

Cytogenetics: 2q14.1

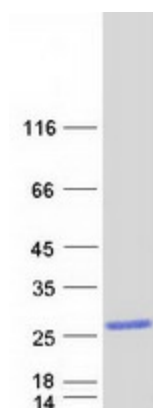
RefSeq ORF: 507

Synonyms: IL-1F9; IL-1H1; IL-1RP2; IL1E; IL1F9; IL1H1; IL1RP2

Summary: The protein encoded by this gene is a member of the interleukin 1 cytokine family. The activity of this cytokine is mediated by interleukin 1 receptor-like 2 (IL1RL2/IL1R-rp2), and is specifically inhibited by interleukin 1 family, member 5 (IL1F5/IL-1 delta). Interferon-gamma, tumor necrosis factor-alpha and interleukin 1, beta (IL1B) are reported to stimulate the expression of this cytokine in keratinocytes. The expression of this cytokine in keratinocytes can also be induced by a contact hypersensitivity reaction or herpes simplex virus infection. This gene and eight other interleukin 1 family genes form a cytokine gene cluster on chromosome 2. [provided by RefSeq, May 2019]

Protein Families: Druggable Genome, Secreted Protein

Product images:



Coomassie blue staining of purified IL36G protein (Cat# [TP324784]). The protein was produced from HEK293T cells transfected with IL36G cDNA clone (Cat# [RC224784]) using MegaTran 2.0 (Cat# [TT210002]).