

## Product datasheet for TP324765

### ROR1 (NM\_001083592) Human Recombinant Protein

#### Product data:

Product Type:	Recombinant Proteins
Description:	Recombinant protein of human receptor tyrosine kinase-like orphan receptor 1 (ROR1), transcript variant 2, 20 µg
Species:	Human
Expression Host:	HEK293T
Expression cDNA Clone or AA Sequence:	>RC224765 representing NM_001083592 <b>Red</b> =Cloning site <b>Green</b> =Tags(s)
	MHRPRRRGTRPPLLALLAALLLAARGAAAQETELSVSAELVPTSSWNISSELNKDSYLTLDPEMNNITTS LGQTAELHCKVSGNPPPTIRWFKNDAPVVQEPRLSFRSTIYGSRLRIRNLDTTDTGYFQCVATNGKEVV SSTGVLVFKFGPPPTASPGYSDEYEEDGFCQPYRGIACARFIGNRTVYMESLHMQGEIENQITAAFTMIG TSSHLSDKCSQFAIPSLCHYAFPYCDETSSVPKPRDLRDECEILENVLCQTEYIFARSNPMLMRLKLP NCEDLPQPESPEAANCIRIGIPMADPINKNHKCYNSTGVDYRGTVSVTKSGRQCQPWNSQYPHTHTFTAL RFPELNGGHSYCRNPGNQKEAPWCFTLDENFKSDLCDIPACGK
	<b>TRTRPLEQKLISEEDLAANDILDYKDDDDKV</b>
Tag:	C-Myc/DDK
Predicted MW:	43.6 kDa
Concentration:	>0.05 µg/µL as determined by microplate BCA method
Purity:	> 80% as determined by SDS-PAGE and Coomassie blue staining
Buffer:	25 mM Tris-HCl, 100 mM glycine, pH 7.3, 10% glycerol
Preparation:	Recombinant protein was captured through anti-DDK affinity column followed by conventional chromatography steps.
Note:	For testing in cell culture applications, please filter before use. Note that you may experience some loss of protein during the filtration process.
Storage:	Store at -80°C.
Stability:	Stable for 12 months from the date of receipt of the product under proper storage and handling conditions. Avoid repeated freeze-thaw cycles.
RefSeq:	<a href="#">NP_001077061</a>



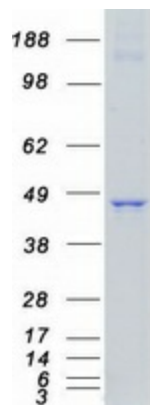
[View online »](#)

Locus ID: 4919  
UniProt ID: [Q01973](#)  
RefSeq Size: 2303  
Cytogenetics: 1p31.3  
RefSeq ORF: 1179  
Synonyms: dj537F10.1; NTRKR1

**Summary:** This gene encodes a receptor tyrosine kinase-like orphan receptor that modulates neurite growth in the central nervous system. The encoded protein is a glycosylated type I membrane protein that belongs to the ROR subfamily of cell surface receptors. It is a pseudokinase that lacks catalytic activity and may interact with the non-canonical Wnt signalling pathway. This gene is highly expressed during early embryonic development but expressed at very low levels in adult tissues. Increased expression of this gene is associated with B-cell chronic lymphocytic leukaemia. Alternative splicing results in multiple transcript variants encoding different isoforms. [provided by RefSeq, Jun 2012]

**Protein Families:** Druggable Genome, Protein Kinase, Transmembrane

### Product images:



Coomassie blue staining of purified ROR1 protein (Cat# TP324765). The protein was produced from HEK293T cells transfected with ROR1 cDNA clone (Cat# [RC224765]) using MegaTran 2.0 (Cat# [TT210002]).