

Product datasheet for TP324759L

SORBS1 (NM_001034955) Human Recombinant Protein

Product data:

Product Type:	Recombinant Proteins
Description:	Recombinant protein of human sorbin and SH3 domain containing 1 (SORBS1), transcript variant 4, 1 mg
Species:	Human
Expression Host:	HEK293T
Expression cDNA	>RC224759 representing NM_001034955
Clone or AA Sequence:	Red=Cloning site Green=Tags(s)

MSSECDGGSKAVMNGLAPGSNGQDKATADPLRARSISAVKIIPVKTVKNASGLVLPTDMDPTKICTGKGA
VTLRASSYRETPSSSPASPQETRQHESKPGLEPEPSSADEWRLSSADANGNAQPSSLAAGYRSVHPN
LPSDKSQDATSSAAQPEVIVPLYLVNTDRGQEGTARPTPLGPLGCVPTIPATASAASPLTFPTLDDF
IPPHLQRWPHHSQPARASGSFAPISQTPPSFSPPPPLVPPAPEDLRRVSEPDLTGAVSSTDSSPLLNEVS
SSLIGTDSQAFPSVSKPSSAYPSTTIVNPTIVLLQHNREQKRLSSSLDPVSERRVGEQDSAPTQEKPTS
PGKAIEKRAKDDSRVVKSTQDLSDVSMDEVGIPLRNTERSKDWYKTMFKQIHKLNDRDTPPENPYFPTYK
FPELPEIQQTSEETKSCSVMSRPLECSGTVIAHCSLKLDDSSNPPTSASQVAGTADDDSDLYSPRYSFSE
DTKSPLSVPRSKSEMSYIDGKVVKRSATLPLPARSSSLKSSSERNDWEPPDKKVDTRKYRAEPKSIY
QPGKSSVLTNEKMSRDISPEEIDLKNEPWYKFFSELEFGKPPPKKIWDYTPGDCSILPREDRKTNLKDL
SLCQTELEADLEKMETLNKAPSANVPQSSAISPTPEISSETPGYIYSSNFHAVKRESDGAPGDLTLENE
RQIYKSVLEGGDIPLQGLSGLKRPSSASTKDESERPHFIPADYLESTEEFIRRRHDDKEKLLADQRRK
REQEEDIAARRHTGVIPTHHQFITNERFGDLLNIDDTAKRKSSEMRRPARAKFDKAQTLKELPLQKGD
IVYIKQIDQNWYEGEHHGRVGFPRTYIELLPAAEKAQPKLTPVQVLEYGEIAKFNFGDTQVEMSF
RKGERITLLRQVDENWYEGRIPGTSRQGIFPITYVDVIKRPVKNPVDYMDLPFSSSPRSATASPQWR
EESGQYERKAERGAGERGPGGPKISKKSCLKPSDVVRCLSTEQRSLDNTPEESRPGKPLGSAFPGESE
QTERHRGGEQAGRKAARRGGSQQPQAQRRVTPDRSQTSDLFYQALYSYIPQNDDELELRDGDIVDVM
EKCDGWFVGTSRRTKQFGTFPGNYVKPLYL

TRTRPLEQKLISEEDLAANDILDYKDDDDKV

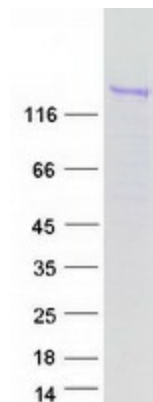
Tag:	C-Myc/DDK
Predicted MW:	127.1 kDa
Concentration:	>0.05 µg/µL as determined by microplate BCA method
Purity:	> 80% as determined by SDS-PAGE and Coomassie blue staining



[View online »](#)

Buffer:	25 mM Tris-HCl, 100 mM glycine, pH 7.3, 10% glycerol
Preparation:	Recombinant protein was captured through anti-DDK affinity column followed by conventional chromatography steps.
Note:	For testing in cell culture applications, please filter before use. Note that you may experience some loss of protein during the filtration process.
Storage:	Store at -80°C.
Stability:	Stable for 12 months from the date of receipt of the product under proper storage and handling conditions. Avoid repeated freeze-thaw cycles.
RefSeq:	NP_001030127
Locus ID:	10580
UniProt ID:	Q9BX66
RefSeq Size:	6803
Cytogenetics:	10q24.1
RefSeq ORF:	3453
Synonyms:	CAP; FLAF2; R85FL; SH3D5; SH3P12; SORB1
Summary:	This gene encodes a CBL-associated protein which functions in the signaling and stimulation of insulin. Mutations in this gene may be associated with human disorders of insulin resistance. Alternative splicing results in multiple transcript variants. [provided by RefSeq, Mar 2014]
Protein Families:	Druggable Genome
Protein Pathways:	Adherens junction, Insulin signaling pathway, PPAR signaling pathway

Product images:



Coomassie blue staining of purified SORBS1 protein (Cat# [TP324759]). The protein was produced from HEK293T cells transfected with SORBS1 cDNA clone (Cat# [RC224759]) using MegaTran 2.0 (Cat# [TT210002]).