

## Product datasheet for TP324746

### TOM1L1 (NM\_005486) Human Recombinant Protein

#### Product data:

Product Type:	Recombinant Proteins
Description:	Recombinant protein of human target of myb1 (chicken)-like 1 (TOM1L1), 20 µg
Species:	Human
Expression Host:	HEK293T
Expression cDNA Clone or AA Sequence:	>RC224746 representing NM_005486 Red=Cloning site Green=Tags(s)

MAFGKSHRDPYATSVGHLIEKATFAGVQTEDWGQFMHICDIINTTQDGPKDAVKALKKRISKNYNHKEIQ  
LTLSLIDMCVQNCGPSFQSLIVKKEFVKENLVKLLNPRYNLPLDIQNRILNFIKTWSQGFPGGVDVSEVK  
EVYLDLVKKGVQFPPSEAEAETARQETAQISSNPPTSVPAPALSSVIAPKNSTVTLVPEQIGKLHSELD  
MVKMNVVRVMSAILMENTPGSENHEDIELLQKLYKTGREMQRIMDLLVVVENEDVTVELIQVNEDLNNAI  
LGYERFTRNQQRILEQNKNQKEATNTTSEPSAPSQDLLDLSPSPRMPRATLGELNTMNNQLSGLNFSLPS  
SDVTNNLKPSLHPQMNLALENTEIPPFARQTSQNLTS SHAYDNFLEHSNSVFLQPVSLQTIAAAPS NQS  
LPPLPSNHPAMTKSDLQPPNYEYVMEFDPLAPAVTTEAIYEEIDAHQHKG AQNDGD

TRTRPLEQKLISEEDLAANDILDYKDDDDKV

Tag:	C-Myc/DDK
Predicted MW:	52.8 kDa
Concentration:	>0.05 µg/µL as determined by microplate BCA method
Purity:	> 80% as determined by SDS-PAGE and Coomassie blue staining
Buffer:	25 mM Tris-HCl, 100 mM glycine, pH 7.3, 10% glycerol
Preparation:	Recombinant protein was captured through anti-DDK affinity column followed by conventional chromatography steps.
Note:	For testing in cell culture applications, please filter before use. Note that you may experience some loss of protein during the filtration process.
Storage:	Store at -80°C.
Stability:	Stable for 12 months from the date of receipt of the product under proper storage and handling conditions. Avoid repeated freeze-thaw cycles.
RefSeq:	<a href="#">NP_005477</a>

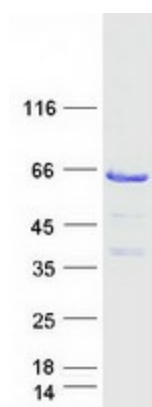


[View online »](#)

Locus ID: 10040  
UniProt ID: [O75674](#)  
RefSeq Size: 2177  
Cytogenetics: 17q22  
RefSeq ORF: 1428  
Synonyms: SRCASM

**Summary:** Probable adapter protein involved in signaling pathways. Interacts with the SH2 and SH3 domains of various signaling proteins when it is phosphorylated. May promote FYN activation, possibly by disrupting intramolecular SH3-dependent interactions (By similarity).  
[UniProtKB/Swiss-Prot Function]

### Product images:



Coomassie blue staining of purified TOM1L1 protein (Cat# TP324746). The protein was produced from HEK293T cells transfected with TOM1L1 cDNA clone (Cat# [RC224746]) using MegaTran 2.0 (Cat# [TT210002]).