

## Product datasheet for **TP324725**

### **TMPRSS4 (NM\_001083947) Human Recombinant Protein**

#### **Product data:**

<b>Product Type:</b>	Recombinant Proteins
<b>Description:</b>	Purified recombinant protein of Homo sapiens transmembrane protease, serine 4 (TMPRSS4), transcript variant 3, 20 µg
<b>Species:</b>	Human
<b>Expression Host:</b>	HEK293T
<b>Expression cDNA Clone or AA Sequence:</b>	>RC224725 representing NM_001083947 <b>Red</b> =Cloning site <b>Green</b> =Tags(s)  MLQDPDSDQPLNSLDVKPLRKPRIPMETFRKVGIPIIIIALLSLASIIIVVLIKVILDKYYFLCGQPLHF IPRKQLCDGELDCPLGDEEHCVKSFPEGPAVAVRLSKDRSTLQVLDSATGNWFSACFDNFTEALAETAC RQMGSRAVEIGPDQDLDVVEITENSQELMRNSSGPCLSGSLVSLHCLACGKSLKTPRVVGGEEASVDS WPWQVSIQYDKQHVCGGSSILDPHWLTAAHCFRKHTDVFNWKVRAGSDKLGSPSLAVAKIIIIIEFNPMY PKDNDIALMKLQFPLTFSGTVRPICLPFFDEELTPATPLWIIIGWGFTKQNGGKMSDILLQASVQVIDSTR CNADDAYQGEVTEKMMCAGIPEGGVDTCQGDSGGPLMYQSDQWHVVGIVSWGYGCGGPSTPGVYTKVSAY LNWIYNVWKAEL  <b>TRTRPLEQKLISEEDLAANDILDYKDDDDKV</b>
<b>Tag:</b>	C-Myc/DDK
<b>Predicted MW:</b>	47.5 kDa
<b>Concentration:</b>	>0.05 µg/µL as determined by microplate BCA method
<b>Purity:</b>	> 80% as determined by SDS-PAGE and Coomassie blue staining
<b>Buffer:</b>	25 mM Tris-HCl, 100 mM glycine, pH 7.3, 10% glycerol
<b>Preparation:</b>	Recombinant protein was captured through anti-DDK affinity column followed by conventional chromatography steps.
<b>Note:</b>	For testing in cell culture applications, please filter before use. Note that you may experience some loss of protein during the filtration process.
<b>Storage:</b>	Store at -80°C.
<b>Stability:</b>	Stable for 12 months from the date of receipt of the product under proper storage and handling conditions. Avoid repeated freeze-thaw cycles.



[View online »](#)

RefSeq: [NP\\_001077416](#)

Locus ID: 56649

UniProt ID: [Q9NRS4](#)

RefSeq Size: 3534

Cytogenetics: 11q23.3

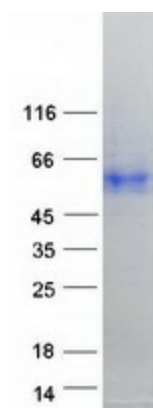
RefSeq ORF: 1296

Synonyms: CAP2; CAPH2; MT-SP2; TMPRSS3

**Summary:** This gene encodes a member of the serine protease family. Serine proteases are known to be involved in a variety of biological processes, whose malfunction often leads to human diseases and disorders. This gene was identified as a gene overexpressed in pancreatic carcinoma. The encoded protein is membrane bound with a N-terminal anchor sequence and a glycosylated extracellular region containing the serine protease domain. Multiple transcript variants encoding different isoforms have been found for this gene. [provided by RefSeq, Jul 2008]

**Protein Families:** Druggable Genome, Protease, Transmembrane

### Product images:



Coomassie blue staining of purified TMPRSS4 protein (Cat# TP324725). The protein was produced from HEK293T cells transfected with TMPRSS4 cDNA clone (Cat# [RC224725]) using MegaTran 2.0 (Cat# [TT210002]).