

## Product datasheet for **TP324722L**

### **BHLHE23 (NM\_080606) Human Recombinant Protein**

#### Product data:

Product Type:	Recombinant Proteins
Description:	Recombinant protein of human basic helix-loop-helix family, member e23 (BHLHE23), 1 mg
Species:	Human
Expression Host:	HEK293T
Expression cDNA Clone or AA Sequence:	>RC224722 representing NM_080606 <b>Red</b> =Cloning site <b>Green</b> =Tags(s)
	 MAELKSLSGDAYLALSHGYAAAAAGLAYGAAREPEAARGYGTPGPGGDLPAAPAPRAPAQAAESSGEQSG DEDDAFEQRRRRRPGSAADGRRRPREQRSLRLSINARERRRMHDLNDALDGLRAVIPYAHSPSVRKLSK IATLLAKNYILMQAALDEMRLVAFLNQGGGLAAPVNAAPLTPFGQATVCPFSAGAALGPCDPKCAAF SGTPSALCKHCHEKP  <b>SGPTRRRLEQKLISEEDLAANDILDYKDDDDKV</b>
Tag:	C-Myc/DDK
Predicted MW:	23.5 kDa
Concentration:	>0.05 µg/µL as determined by microplate BCA method
Purity:	> 80% as determined by SDS-PAGE and Coomassie blue staining
Buffer:	25 mM Tris-HCl, 100 mM glycine, pH 7.3, 10% glycerol
Preparation:	Recombinant protein was captured through anti-DDK affinity column followed by conventional chromatography steps.
Note:	For testing in cell culture applications, please filter before use. Note that you may experience some loss of protein during the filtration process.
Storage:	Store at -80°C.
Stability:	Stable for 12 months from the date of receipt of the product under proper storage and handling conditions. Avoid repeated freeze-thaw cycles.
RefSeq:	<a href="#">NP_542173</a>
Locus ID:	128408
UniProt ID:	<a href="#">Q8NDY6</a> , <a href="#">A0A087WXG3</a>



[View online »](#)

RefSeq Size: 942

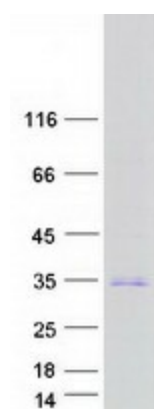
Cytogenetics: 20q13.33

RefSeq ORF: 675

Synonyms: bA305P22.3; Beta3b; BETA4; BHLHB4

**Summary:** This gene encodes a member of the basic helix-loop-helix transcription factor family. Members of this family contain two highly conserved and functionally distinct domains: the basic domain targets sequence-specific DNA binding, while the helix-loop-helix domain facilitates protein interaction. Studies of a related gene in mouse suggest that the encoded protein may function as a transcriptional repressor in the pancreas and brain, and that it is required for normal retinal function. [provided by RefSeq, May 2013]

### Product images:



Coomassie blue staining of purified BHLHE23 protein (Cat# [TP324722]). The protein was produced from HEK293T cells transfected with BHLHE23 cDNA clone (Cat# [RC224722]) using MegaTran 2.0 (Cat# [TT210002]).