

Product datasheet for **TP324720**

PLXDC2 (NM_032812) Human Recombinant Protein

Product data:

Product Type:	Recombinant Proteins
Description:	Recombinant protein of human plexin domain containing 2 (PLXDC2), 20 µg
Species:	Human
Expression Host:	HEK293T
Expression cDNA	>RC224720 representing NM_032812
Clone or AA Sequence:	Red=Cloning site Green=Tags(s)

MARFPKADLAAAGVMLLCHFFTDQFQFADGKPGDQILDWQYGVTAQFPHTEEVEVDSHAYSHRWKRNLD
FLKAVDTNRSVQDSPEPRSFDTLLDDGQDNNTQIEEDTDHNYIISRIYGPSASRDLDWVNIQMEK
DKVKIHGILSNTHRQAARVNLSFDFPFYGHFLREITVATGGFIYTGCVHRMLTATQYIAPLMANFDPSV
SRNSTVRYFDNGTALVQWDHVLQDNYNLGSFTFQATLLMDGRIIFGYKEIPVLVTQISSTNHPVKVGL
SDAFVWHRIQQIPNVRRTIYEHYRVELQMSKITNISAVEMTLPCLQFNRCGPCVSSQIGFNCSWCS
KLQRCSSGFDRHRQDWVDSGCPEESKEKMCENTEPVETSSRTTTTGVATTTQFRVLTTRRAVTSQFPTS
LPTEDDTKIALHLKDNGASTDDSAEKKGGTLHAGLIIGILILVIVATAILVTVYMYHHPTSAASIFFI
ERRPSRWPMKFRRGSGHPAYAEVEPVGEKEGFIVSEQC

SGPTRRRLEQKLISEEDLAANDILDYKDDDDKV

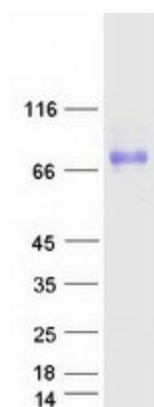
Tag:	C-Myc/DDK
Predicted MW:	59.4 kDa
Concentration:	>0.05 µg/µL as determined by microplate BCA method
Purity:	> 80% as determined by SDS-PAGE and Coomassie blue staining
Buffer:	25 mM Tris-HCl, 100 mM glycine, pH 7.3, 10% glycerol
Preparation:	Recombinant protein was captured through anti-DDK affinity column followed by conventional chromatography steps.
Note:	For testing in cell culture applications, please filter before use. Note that you may experience some loss of protein during the filtration process.
Storage:	Store at -80°C.
Stability:	Stable for 12 months from the date of receipt of the product under proper storage and handling conditions. Avoid repeated freeze-thaw cycles.



[View online >](#)

RefSeq:	<u>NP_116201</u>
Locus ID:	84898
UniProt ID:	<u>Q6UX71</u>
RefSeq Size:	2594
Cytogenetics:	10p12.31
RefSeq ORF:	1587
Synonyms:	TEM7R
Summary:	May play a role in tumor angiogenesis.[UniProtKB/Swiss-Prot Function]
Protein Families:	Druggable Genome, Transmembrane

Product images:



Coomassie blue staining of purified PLXDC2 protein (Cat# TP324720). The protein was produced from HEK293T cells transfected with PLXDC2 cDNA clone (Cat# [RC224720]) using MegaTran 2.0 (Cat# [TT210002]).