

## Product datasheet for TP324705M

### SPAG16 (NM\_024532) Human Recombinant Protein

#### Product data:

Product Type:	Recombinant Proteins
Description:	Recombinant protein of human sperm associated antigen 16 (SPAG16), transcript variant 1, 100 µg
Species:	Human
Expression Host:	HEK293T
Expression cDNA Clone or AA Sequence:	>RC224705 representing NM_024532 Red=Cloning site Green=Tags(s)

MAAQRGMPSSAVRVLEEALGMGLTAAGDARDTADAVAAEGAYYLEQVTITEASEDDYEYEEIPDDNFSIP  
EGEEDLAKAIQMAQEATDTEILERKTVLPSKHAVPEVIEDFLCNFLIKMGMTRTLDCFQSEWYELIQKG  
VTELRTVGNVPDVTQIMLLENENKNLKKDLKHYQAADKAREDLLKIQKERDFHRMHHRIVQEKNKLI  
NDLKGLKLHYASYEPTIRVLHEKHHTLLKEKMLTSLERDKVVGQISGLQETLKKLQRGHSYHGPQIKVDH  
SREKENAPEGPTQKGLREAREQNKCKTKMKGNTKDSEFPIDMQPNPNLNVSKESLSPAKFDYKLNIFRL  
HELVPVSCVSMQPHKDILVSCGEDRLWKVLGLPKCNVLLTGFQHTDWLSDCCFHPSPGDKLATSSGDTTVKL  
WDLCKGDCILTFEGHSRAVWSCTWHSCGNFVASSSLDKTSKIWDVNSERCRTLYGHTDSVNSIEFFPFS  
NTLLTSSADKTLSIWDARTGICEQSLYGHMHSINDAIFDPRGHMIASCDACGVTKLWDFRLLPIVSI  
GPSPGNEVNFSSGRVLAQASGNGVIHLLDLKSGEIHKLMGHENEHTVWFSHDGEILFSGGSDGTVRTW  
S

TRTRPLEQKLISEEDLAANDILDYKDDDDKV

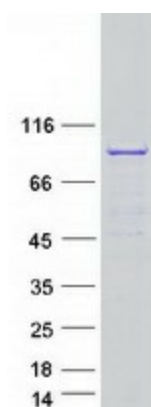
Tag:	C-Myc/DDK
Predicted MW:	70.6 kDa
Concentration:	>0.05 µg/µL as determined by microplate BCA method
Purity:	> 80% as determined by SDS-PAGE and Coomassie blue staining
Buffer:	25 mM Tris-HCl, 100 mM glycine, pH 7.3, 10% glycerol
Preparation:	Recombinant protein was captured through anti-DDK affinity column followed by conventional chromatography steps.
Note:	For testing in cell culture applications, please filter before use. Note that you may experience some loss of protein during the filtration process.
Storage:	Store at -80°C.



[View online »](#)

<b>Stability:</b>	Stable for 12 months from the date of receipt of the product under proper storage and handling conditions. Avoid repeated freeze-thaw cycles.
<b>RefSeq:</b>	<a href="#">NP_078808</a>
<b>Locus ID:</b>	79582
<b>UniProt ID:</b>	<a href="#">Q8N0X2</a> , <a href="#">Q4G1A2</a> , <a href="#">B4DYB5</a>
<b>RefSeq Size:</b>	2189
<b>Cytogenetics:</b>	2q34
<b>RefSeq ORF:</b>	1893
<b>Synonyms:</b>	PF20; WDR29
<b>Summary:</b>	Cilia and flagella are comprised of a microtubular backbone, the axoneme, which is organized by the basal body and surrounded by plasma membrane. SPAG16 encodes 2 major proteins that associate with the axoneme of sperm tail and the nucleus of postmeiotic germ cells, respectively (Zhang et al., 2007 [PubMed 17699735]).[supplied by OMIM, Jul 2008]

### Product images:



Coomassie blue staining of purified SPAG16 protein (Cat# [TP324705]). The protein was produced from HEK293T cells transfected with SPAG16 cDNA clone (Cat# [RC224705]) using MegaTran 2.0 (Cat# [TT210002]).