

Product datasheet for TP324705L

SPAG16 (NM_024532) Human Recombinant Protein

Product data:

| | |
|---------------------------------------|---|
| Product Type: | Recombinant Proteins |
| Description: | Recombinant protein of human sperm associated antigen 16 (SPAG16), transcript variant 1, 1 mg |
| Species: | Human |
| Expression Host: | HEK293T |
| Expression cDNA Clone or AA Sequence: | >RC224705 representing NM_024532 Red=Cloning site Green=Tags(s) |

MAAQRGMPSSAVRVLEEALGMGLTAAGDARDTADAVAAEGAYYLEQVTITEASEDDYEYEEIPDDNFSIP
EGEEDLAKAIQMAQEATDTEILERKTVLPSKHAVPEVIEDFLCNFLIKMGMTRTLDCFQSEWYELIQKG
VTELRTVGNVPDYVTQIMLLENENKNLKKDLKHYKQAADKAREDLLKIQKERDFHRMHHRIVQEKNKLI
NDLKGLKLHYASYEPTIRVLHEKHHTLLKEKMLTSLERDKVVGQISGLQETLKKLQRGHSYHGPQIKVDH
SREKENAPEGPTQKGLREAREQNKCKTKMKGNTKDSEFPIDMQPNPNLNVSKESLSPAKFDYKLNIFRL
HELVPVSCVSMQPHKDILVSCGEDRLWKVLGLPKCNVLLTGFQHTDWLSDCCFHPSPGDKLATSSGDTTVKL
WDLCKGDCILTFEGHSRAVWSCTWHSCGNFVASSSLDKTSKIWDVNSERCRTLYGHTDSVNSIEFFPFS
NTLLTSSADKTLSIWDARTGICEQSLYGHMHSINDAIFDPRGHMIASCDACGVTKLWDFRLLPIVSIDI
GPSPGNEVNFSSGRVLAQASGNGVIHLLDLKSGEIHKLMGHENEHTVWFSHDGEILFSGGSDGTVRTW
S

TRTRPLEQKLISEEDLAANDILDYKDDDDKV

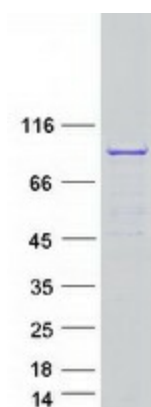
| | |
|----------------|--|
| Tag: | C-Myc/DDK |
| Predicted MW: | 70.6 kDa |
| Concentration: | >0.05 µg/µL as determined by microplate BCA method |
| Purity: | > 80% as determined by SDS-PAGE and Coomassie blue staining |
| Buffer: | 25 mM Tris-HCl, 100 mM glycine, pH 7.3, 10% glycerol |
| Preparation: | Recombinant protein was captured through anti-DDK affinity column followed by conventional chromatography steps. |
| Note: | For testing in cell culture applications, please filter before use. Note that you may experience some loss of protein during the filtration process. |
| Storage: | Store at -80°C. |



[View online »](#)

| | |
|----------------------|---|
| Stability: | Stable for 12 months from the date of receipt of the product under proper storage and handling conditions. Avoid repeated freeze-thaw cycles. |
| RefSeq: | NP_078808 |
| Locus ID: | 79582 |
| UniProt ID: | Q8N0X2 , Q4G1A2 , B4DYB5 |
| RefSeq Size: | 2189 |
| Cytogenetics: | 2q34 |
| RefSeq ORF: | 1893 |
| Synonyms: | PF20; WDR29 |
| Summary: | Cilia and flagella are comprised of a microtubular backbone, the axoneme, which is organized by the basal body and surrounded by plasma membrane. SPAG16 encodes 2 major proteins that associate with the axoneme of sperm tail and the nucleus of postmeiotic germ cells, respectively (Zhang et al., 2007 [PubMed 17699735]).[supplied by OMIM, Jul 2008] |

Product images:



Coomassie blue staining of purified SPAG16 protein (Cat# [TP324705]). The protein was produced from HEK293T cells transfected with SPAG16 cDNA clone (Cat# [RC224705]) using MegaTran 2.0 (Cat# [TT210002]).