

Product datasheet for TP324705

SPAG16 (NM_024532) Human Recombinant Protein

Product data:

Product Type:	Recombinant Proteins
Description:	Recombinant protein of human sperm associated antigen 16 (SPAG16), transcript variant 1, 20 µg
Species:	Human
Expression Host:	HEK293T
Expression cDNA Clone or AA Sequence:	>RC224705 representing NM_024532 Red=Cloning site Green=Tags(s)

MAAQRGMPSSAVRVLEEALGMGLTAAGDARDTADAVAAEGAYYLEQVTITEASEDDYEYEEIPDDNFSIP
EGEEDLAKAIQMAQEATDTEILERKTVLPSKHAVPEVIEDFLCNFLIKMGMTRTLDCFQSEWYELIQKG
VTELRTVGNVPDYVTQIMLLENENKNLKKDLKHYQAADKAREDLLKIQKERDFHRMHKRVQEKNKLI
NDLKGLKLHYASYEPTIRVLHEKHHTLLKEKMLTSLERDKVVGQISGLQETLKKLQRGHSYHGPQIKVDH
SREKENAPEGPTQKGLREAREQNKCKTKMKGNTKDSEFPIDMQPNPNLNVSKESLSPAKFDYKLNIFRL
HELVPVSCVSMQPHKDILVSCGEDRLWKVLGLPKCNVLLTGFQHTDWLSDCCFHPSPGDKLATSSGDTTVKL
WDLCKGDCILTFEGHSRAVWSCTWHSCGNFVASSLDTKSKIWDVNSERCRTLYGHTDSVNSIEFFPFS
NTLLTSSADKTLSIWDARTGICEQSLYGHMHSINDAIFDPRGHMIASCDACGVTKLWDFRLLPIVSIDI
GPSPGNEVNFSSGRVLAQASGNGVIHLLDLKSGEIHKLMGHENEHTVWFSDHGEILFSGGSDGTVRTW
S

TRTRPLEQKLISEEDLAANDILDYKDDDDKV

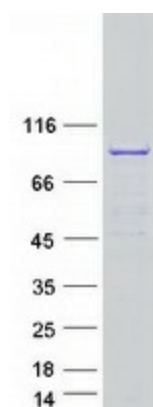
Tag:	C-Myc/DDK
Predicted MW:	70.6 kDa
Concentration:	>0.05 µg/µL as determined by microplate BCA method
Purity:	> 80% as determined by SDS-PAGE and Coomassie blue staining
Buffer:	25 mM Tris-HCl, 100 mM glycine, pH 7.3, 10% glycerol
Preparation:	Recombinant protein was captured through anti-DDK affinity column followed by conventional chromatography steps.
Note:	For testing in cell culture applications, please filter before use. Note that you may experience some loss of protein during the filtration process.
Storage:	Store at -80°C.



[View online »](#)

Stability:	Stable for 12 months from the date of receipt of the product under proper storage and handling conditions. Avoid repeated freeze-thaw cycles.
RefSeq:	NP_078808
Locus ID:	79582
UniProt ID:	Q8N0X2 , Q4G1A2 , B4DYB5
RefSeq Size:	2189
Cytogenetics:	2q34
RefSeq ORF:	1893
Synonyms:	PF20; WDR29
Summary:	Cilia and flagella are comprised of a microtubular backbone, the axoneme, which is organized by the basal body and surrounded by plasma membrane. SPAG16 encodes 2 major proteins that associate with the axoneme of sperm tail and the nucleus of postmeiotic germ cells, respectively (Zhang et al., 2007 [PubMed 17699735]).[supplied by OMIM, Jul 2008]

Product images:



Coomassie blue staining of purified SPAG16 protein (Cat# TP324705). The protein was produced from HEK293T cells transfected with SPAG16 cDNA clone (Cat# [RC224705]) using MegaTran 2.0 (Cat# [TT210002]).