

Product datasheet for **TP324693L**

TORC1 (CRTC1) (NM_001098482) Human Recombinant Protein

Product data:

| | |
|-----------------------|---|
| Product Type: | Recombinant Proteins |
| Description: | Recombinant protein of human CREB regulated transcription coactivator 1 (CRTC1), transcript variant 3, 1 mg |
| Species: | Human |
| Expression Host: | HEK293T |
| Expression cDNA | >RC224693 representing NM_001098482 |
| Clone or AA Sequence: | Red=Cloning site Green=Tags(s) |

MATSNNPRKFSEKIALHNQKQAEETAAFEVEMKDLSTRAARLQLQKSQYLQLGPSRGQYYGGSLPNVNQ
IGSGTMDLPFQPSGFLGEALAAAPVSLTPFQSSGLDTSRTRHHGLVDRVYRERGLGSPHRRPLSVDKH
GRQADSCPYGTMYLSPPADTSWRRTNSDSALHQSTMTPTQPESFSSGSQDVHQKRVLLLTVPGMEETTSE
ADKNLSKQAWDTKKTGSRPKSCEVPGINIFPSADQENTTALIPATHNTGGSLPDLTNIHFPSPLPTPLDP
EEPTFPALSSSSSTGNLAANLTHLGIGGAGQGMSTPGSSPQHRPAGVSPLSLSTEARRQQASPTLSPLSP
ITQAVAMDALSLEQQLPYAFFTQAGSQPPPPQPQPPPPPPASQPPPPPPQAPVRLPPGGPLLPSASL
TRGPQPPPLAVTPSSLPQSPPENPGQPSMGIDIASAPALQYRTSAGSPANQSPTSPVSNQGFSPGSSP
QHTSTLGSVFGDAYYEQQMAARQANALSHQLEQFNMMENAISSSSLYSPGSTLNYSQAAMMGLTGSHGSL
PDSQQLGYASHGIPNIILTVTGESPPSLSKELTSSLAGVGDVSDSDSQFPLDELKIDPLTLDGLHMLN
DPDMVLADPATEDTFRMDRL

SGPTRRRLEQKLISEEDLAANDILDYKDDDDKV

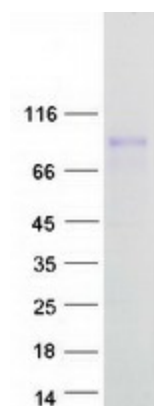
| | |
|----------------|--|
| Tag: | C-Myc/DDK |
| Predicted MW: | 68.6 kDa |
| Concentration: | >0.05 µg/µL as determined by microplate BCA method |
| Purity: | > 80% as determined by SDS-PAGE and Coomassie blue staining |
| Buffer: | 25 mM Tris-HCl, 100 mM glycine, pH 7.3, 10% glycerol |
| Preparation: | Recombinant protein was captured through anti-DDK affinity column followed by conventional chromatography steps. |
| Note: | For testing in cell culture applications, please filter before use. Note that you may experience some loss of protein during the filtration process. |
| Storage: | Store at -80°C. |



[View online »](#)

| | |
|--------------------------|---|
| Stability: | Stable for 12 months from the date of receipt of the product under proper storage and handling conditions. Avoid repeated freeze-thaw cycles. |
| RefSeq: | NP_001091952 |
| Locus ID: | 23373 |
| UniProt ID: | Q6UUU9 |
| RefSeq Size: | 7009 |
| Cytogenetics: | 19p13.11 |
| RefSeq ORF: | 1950 |
| Synonyms: | Mam-2; MAML2; MECT1; TORC-1; TORC1; WAMTP1 |
| Summary: | Transcriptional coactivator for CREB1 which activates transcription through both consensus and variant cAMP response element (CRE) sites. Acts as a coactivator, in the SIK/TORC signaling pathway, being active when dephosphorylated and acts independently of CREB1 'Ser-133' phosphorylation. Enhances the interaction of CREB1 with TAF4. Regulates the expression of specific CREB-activated genes such as the steroidogenic gene, StAR. Potent coactivator of PGC1alpha and inducer of mitochondrial biogenesis in muscle cells. In the hippocampus, involved in late-phase long-term potentiation (L-LTP) maintenance at the Schaffer collateral-CA1 synapses. May be required for dendritic growth of developing cortical neurons (By similarity). In concert with SIK1, regulates the light-induced entrainment of the circadian clock. In response to light stimulus, coactivates the CREB-mediated transcription of PER1 which plays an important role in the photic entrainment of the circadian clock.[UniProtKB/Swiss-Prot Function] |
| Protein Families: | Transcription Factors |

Product images:



Coomassie blue staining of purified CRTC1 protein (Cat# [TP324693]). The protein was produced from HEK293T cells transfected with CRTC1 cDNA clone (Cat# [RC224693]) using MegaTran 2.0 (Cat# [TT210002]).