

Product datasheet for **TP324693**

TORC1 (CRTC1) (NM_001098482) Human Recombinant Protein

Product data:

Product Type:	Recombinant Proteins
Description:	Recombinant protein of human CREB regulated transcription coactivator 1 (CRTC1), transcript variant 3, 20 µg
Species:	Human
Expression Host:	HEK293T
Expression cDNA	>RC224693 representing NM_001098482
Clone or AA Sequence:	Red=Cloning site Green=Tags(s)

MATSNNPRKFSEKIALHNQKQAEETAAFEVVMKDLSTRAARLQLQKSQYLQLGPSRGQYYGGSLPNVNQ
IGSGTMDLPFQPSGFLGEALAAAPVSLTPFQSSGLDTSRTRHHGLVDRVYRERGLGSPHRRPLSVDKH
GRQADSCPYGTMYLSPPADTSWRRTNSDSALHQSTMTPTQPESFSSGSQDVHQKRVLLLTVPGMEETTSE
ADKNLSKQAWDTKKTGSRPKSCEVPGINIFPSADQENTTALIPATHNTGGSLPDLTNIHFPSPLPTPLDP
EEPTFPALSSSSSTGNLAANLTHLGIGGAGQGMSTPGSSPQHRPAGVSPLSLSTEARRQQASPTLSPLSP
ITQAVAMDALSLEQQLPYAFFTQAGSQPPPPQPQPPPPPPASQPPPPPPQAPVRLPPGGPLLPSASL
TRGPQPPPLAVTVPSSLPQSPPENPGQPSMGIDIASAPALQYRTSAGSPANQSPTSPVSNQGFSPGSSP
QHTSTLGSVFGDAYYEQQMAARQANALSHQLEQFNMMENAISSSSLYSPGSTLNYSQAAMMGLTGSHGSL
PDSQQLGYASHGIPNIILTVTGESPPSLSKELTSSLAGVGDVSDSDSQFPLDELKIDPLTLDGLHMLN
DPDMVLADPATEDTFRMDRL

SGPTRRRLEQKLISEEDLAANDILDYKDDDDKV

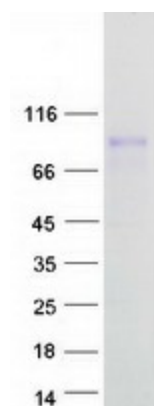
Tag:	C-Myc/DDK
Predicted MW:	68.6 kDa
Concentration:	>0.05 µg/µL as determined by microplate BCA method
Purity:	> 80% as determined by SDS-PAGE and Coomassie blue staining
Buffer:	25 mM Tris-HCl, 100 mM glycine, pH 7.3, 10% glycerol
Preparation:	Recombinant protein was captured through anti-DDK affinity column followed by conventional chromatography steps.
Note:	For testing in cell culture applications, please filter before use. Note that you may experience some loss of protein during the filtration process.
Storage:	Store at -80°C.



[View online »](#)

Stability:	Stable for 12 months from the date of receipt of the product under proper storage and handling conditions. Avoid repeated freeze-thaw cycles.
RefSeq:	NP_001091952
Locus ID:	23373
UniProt ID:	Q6UUU9
RefSeq Size:	7009
Cytogenetics:	19p13.11
RefSeq ORF:	1950
Synonyms:	Mam-2; MAML2; MECT1; TORC-1; TORC1; WAMTP1
Summary:	Transcriptional coactivator for CREB1 which activates transcription through both consensus and variant cAMP response element (CRE) sites. Acts as a coactivator, in the SIK/TORC signaling pathway, being active when dephosphorylated and acts independently of CREB1 'Ser-133' phosphorylation. Enhances the interaction of CREB1 with TAF4. Regulates the expression of specific CREB-activated genes such as the steroidogenic gene, StAR. Potent coactivator of PGC1alpha and inducer of mitochondrial biogenesis in muscle cells. In the hippocampus, involved in late-phase long-term potentiation (L-LTP) maintenance at the Schaffer collateral-CA1 synapses. May be required for dendritic growth of developing cortical neurons (By similarity). In concert with SIK1, regulates the light-induced entrainment of the circadian clock. In response to light stimulus, coactivates the CREB-mediated transcription of PER1 which plays an important role in the photic entrainment of the circadian clock.[UniProtKB/Swiss-Prot Function]
Protein Families:	Transcription Factors

Product images:



Coomassie blue staining of purified CRTC1 protein (Cat# TP324693). The protein was produced from HEK293T cells transfected with CRTC1 cDNA clone (Cat# [RC224693]) using MegaTran 2.0 (Cat# [TT210002]).