

## Product datasheet for **TP324692**

### TAL2 (NM\_005421) Human Recombinant Protein

#### Product data:

**Product Type:** Recombinant Proteins

**Description:** Recombinant protein of human T-cell acute lymphocytic leukemia 2 (TAL2), 20 µg

**Species:** Human

**Expression Host:** HEK293T

**Expression cDNA Clone or AA Sequence:** >RC224692 protein sequence  
**Red**=Cloning site **Green**=Tags(s)

MTRKIFTNTRERWRQQNVNSAFALRKLIPHTPPDKKLSKNETLRLAMRYINFLVKVLGEQSLQQTGVAA  
QGNILGLFPQGPHLPGLDRTLLENYQVPSPGSHHIP

**TRTRPLEQKLISEEDLAANDILDYKDDDDKV**

**Tag:** C-Myc/DDK

**Predicted MW:** 12.1 kDa

**Concentration:** >0.05 µg/µL as determined by microplate BCA method

**Purity:** > 80% as determined by SDS-PAGE and Coomassie blue staining

**Buffer:** 25 mM Tris-HCl, 100 mM glycine, pH 7.3, 10% glycerol

**Preparation:** Recombinant protein was captured through anti-DDK affinity column followed by conventional chromatography steps.

**Note:** For testing in cell culture applications, please filter before use. Note that you may experience some loss of protein during the filtration process.

**Storage:** Store at -80°C.

**Stability:** Stable for 12 months from the date of receipt of the product under proper storage and handling conditions. Avoid repeated freeze-thaw cycles.

**RefSeq:** [NP\\_005412](#)

**Locus ID:** 6887

**UniProt ID:** [Q16559](#)

**RefSeq Size:** 656

**Cytogenetics:** 9q31.2



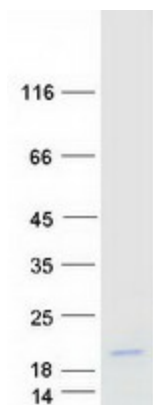
[View online »](#)

RefSeq ORF: 324

**Summary:** This intronless gene encodes a helix-loop-helix protein. Translocations between this gene on chromosome 9 and the T-cell receptor beta-chain locus on chromosome 7 have been associated with activation of the T-cell acute lymphocytic leukemia 2 gene and T-cell acute lymphoblastic leukemia. [provided by RefSeq, Mar 2009]

**Protein Families:** Druggable Genome

### Product images:



Coomassie blue staining of purified TAL2 protein (Cat# TP324692). The protein was produced from HEK293T cells transfected with TAL2 cDNA clone (Cat# [RC224692]) using MegaTran 2.0 (Cat# [TT210002]).