

## Product datasheet for **TP324689M**

### **SULT1A2 (NM\_001054) Human Recombinant Protein**

#### **Product data:**

**Product Type:** Recombinant Proteins

**Description:** Recombinant protein of human sulfotransferase family, cytosolic, 1A, phenol-preferring, member 2 (SULT1A2), transcript variant 1, 100 µg

**Species:** Human

**Expression Host:** HEK293T

**Expression cDNA Clone or AA Sequence:** >RC224689 protein sequence  
**Red**=Cloning site **Green**=Tags(s)

MELIQDISRPPLEYVKGVPLIKYFAEALGPLQSFQARPDDLSTYPKSGTTWVSQILDMIYQGGDLEKC  
HRAPIFMRVVPFLEFKVPGIPSGMETLKNTAPARLLKTHLPLALLPQTLLDQVKVWVYVARNKDVAVSYY  
HFYHMAKVYPHPGTWESFLEKFMAGEVSYGSWYQHVQEWELSRTHPVLYLFYEDMKENPKREIQKILEF  
VGRSLPEETVDLMVEHTSFKEMKKNPMTNYTTVRRREFMDHSISPFMRKGMAGDWKTTFTVAQNERFDADY  
AEKMAGCSLSFRSEL

**TRTRPLEQKLISEEDLAANDILDYKDDDDKV**

**Tag:** C-Myc/DDK

**Predicted MW:** 34.1 kDa

**Concentration:** >0.05 µg/µL as determined by microplate BCA method

**Purity:** > 80% as determined by SDS-PAGE and Coomassie blue staining

**Buffer:** 25 mM Tris-HCl, 100 mM glycine, pH 7.3, 10% glycerol

**Preparation:** Recombinant protein was captured through anti-DDK affinity column followed by conventional chromatography steps.

**Note:** For testing in cell culture applications, please filter before use. Note that you may experience some loss of protein during the filtration process.

**Storage:** Store at -80°C.

**Stability:** Stable for 12 months from the date of receipt of the product under proper storage and handling conditions. Avoid repeated freeze-thaw cycles.

**RefSeq:** [NP\\_001045](#)

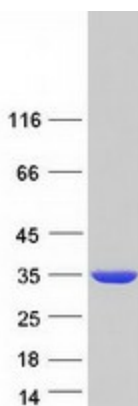
**Locus ID:** 6799



[View online »](#)

UniProt ID:	<a href="#">P50226</a>
RefSeq Size:	1075
Cytogenetics:	16p11.2
RefSeq ORF:	885
Synonyms:	HAST4; P-PST; P-PST 2; ST1A2; STP2; TSPST2
Summary:	Sulfotransferase enzymes catalyze the sulfate conjugation of many hormones, neurotransmitters, drugs, and xenobiotic compounds. These cytosolic enzymes are different in their tissue distributions and substrate specificities. The gene structure (number and length of exons) is similar among family members. This gene encodes one of two phenol sulfotransferases with thermostable enzyme activity. Two alternatively spliced variants that encode the same protein have been described. [provided by RefSeq, Jul 2008]
Protein Pathways:	Sulfur metabolism

### Product images:



Coomassie blue staining of purified SULT1A2 protein (Cat# [TP324689]). The protein was produced from HEK293T cells transfected with SULT1A2 cDNA clone (Cat# [RC224689]) using MegaTran 2.0 (Cat# [TT210002]).