

## Product datasheet for **TP324639M**

### **CLTCL1 (NM\_007098) Human Recombinant Protein**

#### **Product data:**

Product Type:	Recombinant Proteins
Description:	Recombinant protein of human clathrin, heavy chain-like 1 (CLTCL1), 100 µg
Species:	Human
Expression Host:	HEK293T



[View online »](#)

**Expression cDNA Clone** >RC224639 representing NM\_007098  
**or AA Sequence:** Red=Cloning site Green=Tags(s)

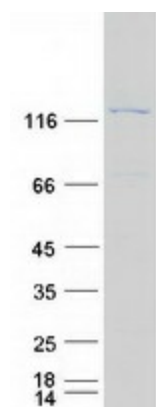
MAQILPVRFQEHFQLQNLGINPANIGFSTLTMESDKFICIREKVGGEQAQVTIIDMSDPMAPIRRPISAES  
 AIMNPASKVIALKAGKTLQIFNIEMKSKMKAHTMAEEVIFWKWVSVNTVALVTETAVYHWSMEGDSQPMK  
 MFDRHTSLVGCQVIHYRTDEYQKWL L LVGISAQQNRVVGAMQLYSVDRKVSQPIEGHAAAFKMEGNA  
 KPATLFCFAVRNPTGGKLIIEVGQPAAGNQPFVKKAVDVFFPPEAQNDFPVAMQIGAKHGVIYLITKYG  
 YLHLYDLESGVCICMNRISADTIFVTAPHKPTSGIIGVNNKKGQVLSVCVEEDNIVNYATNVLQNPDLGLR  
 LAVRSNLAGAELFVRKFNTLFAQGSYAEAAKVAASAPKGILRTRETQVKFQSIQAQSGQASPLLQYFGI  
 LLDQGGQNLKLESLELCHLVLQQGRKQLEKWLKEDKLECSEELGDLVKTTPMLALSIVLRANVPSKVIQ  
 CFAETGQFQKIVLYAKKVGYPDWIFLLRGVMKISPEQGLQFSRMLVQDEEPLANISQIVDIFMENSLIQ  
 QCTSFLLDALKNNRPAEGLLQTWLLEMNLVHAPQVADAILGNKMFTHYDRAHIAQLCEKAGLLQQALEHY  
 TDLYDIKRAVHHTHLLNPEWLVNFFGSLSVEDSVECLHAMLSANIRQNLQLCVQVASKYHEQLGTQALVE  
 LFESFKSYKGLFYFLGSIVNFSQDPDVHLKYIQAACKTGQIKEVERICRESSCYNPERVKNFLKEAKLTD  
 QLPLIIVCDRFGFVHDLVLYLRNNLQRYIEIYVQKVNPSRTPAVIGLLDVCSEEVIKHLIMAVRGQF  
 STDELVAEVEKRNRLKLLPWLESQIQEGCEEPATHNALAKIYIDSNNSPECFLRENAYDSSVVGRYCE  
 KRDPHLACVAYERGQCDLELIKVCNENSLFKSEARYLVCRKDPELWAHVLEETNPSRRQLIDQVQTALS  
 ETRDPEEISVTVKAFMTADLPNELIELLEKIVLDNSVFSEHRNLQNLILITAIKADRTRVMEYISRLDNY  
 DALDIASIAVSSALYEEAFTVFHKFDMNASAIQVLIHIGNLDRAYEFAERCNEPAVWSQLAQAQLQKDL  
 VKEAINSYIRGDDPSSYLEVVQSASRSNNWEDLVKFLQMARKKGRESYIETELIFALAKTSRVSELEDFI  
 NGPNNNAHIQQVGDRCYEEGMYEAAKLLYSNVSNFARLASTLVHLGEYQAAVDNSRKASSTRTWKEVCFAC  
 MDGQEFRFAQLCGLHIVIHADLEELMCYYQDRGYFEELILLLEAALGLERAHMGMFTELAIFYSKFKPQ  
 KMLEHLELWFSRVNIPKVLRAAEQAHLWAEVFLYDKYEEYDNAVLTMMSPTEAWKEGQFKDIITKVAN  
 VELCYRALQFYLDYKPLLINDLLLVSRLDHTWTVSFFSKAGQLPLVKPYLRSVQSHNNKSVNEALNHL  
 LTEEEDYQGLRASIDAYDNFDNISLAQQLEKHQLMEFRCAIAYLYKGNWWAQSVELCKKDHLKYDAMQH  
 AAESRDAELAQKLLQWFLEEGKRECFAACLFTCYDLLRPDMVLELAWRHNLDLAMPYFIQVMREYLSKV  
 DKLDALESLRKQEEHVTEPAPLVDFDFGHE

TRTRPLEQKLISEEDLAANDILDYKDDDDKV

- Tag:** C-Myc/DDK
- Predicted MW:** 186.9 kDa
- Concentration:** >0.05 µg/µL as determined by microplate BCA method
- Purity:** > 80% as determined by SDS-PAGE and Coomassie blue staining
- Buffer:** 25 mM Tris-HCl, 100 mM glycine, pH 7.3, 10% glycerol
- Preparation:** Recombinant protein was captured through anti-DDK affinity column followed by conventional chromatography steps.
- Note:** For testing in cell culture applications, please filter before use. Note that you may experience some loss of protein during the filtration process.
- Storage:** Store at -80°C.

<b>Stability:</b>	Stable for 12 months from the date of receipt of the product under proper storage and handling conditions. Avoid repeated freeze-thaw cycles.
<b>RefSeq:</b>	<a href="#">NP_009029</a>
<b>Locus ID:</b>	8218
<b>UniProt ID:</b>	<a href="#">P53675</a>
<b>RefSeq Size:</b>	5525
<b>Cytogenetics:</b>	22q11.21
<b>RefSeq ORF:</b>	4920
<b>Synonyms:</b>	CHC22; CLH22; CLTCL; CLTD
<b>Summary:</b>	This gene is a member of the clathrin heavy chain family and encodes a major protein of the polyhedral coat of coated pits and vesicles. Chromosomal aberrations involving this gene are associated with meningioma, DiGeorge syndrome, and velo-cardio-facial syndrome. Multiple transcript variants encoding different isoforms have been found for this gene. [provided by RefSeq, Jun 2009]
<b>Protein Families:</b>	Druggable Genome
<b>Protein Pathways:</b>	Endocytosis, Huntington's disease, Lysosome

### Product images:



Coomassie blue staining of purified CLTCL1 protein (Cat# [TP324639]). The protein was produced from HEK293T cells transfected with CLTCL1 cDNA clone (Cat# [RC224639]) using MegaTran 2.0 (Cat# [TT210002]).