

Product datasheet for **TP324639L**

CLTCL1 (NM_007098) Human Recombinant Protein

Product data:

Product Type:	Recombinant Proteins
Description:	Recombinant protein of human clathrin, heavy chain-like 1 (CLTCL1), 1 mg
Species:	Human
Expression Host:	HEK293T



[View online »](#)

Expression cDNA Clone >RC224639 representing NM_007098
or AA Sequence: Red=Cloning site Green=Tags(s)

MAQILPVRFQEHFQLQNLGINPANIGFSTLTMESDKFICIREKVGGEQAQVTIIDMSDPMAPIRRPISAES
 AIMNPASKVIALKAGKTLQIFNIEMKSKMKAHTMAEEVIFWKWVSVNTVALVTETAVYHWSMEGDSQPMK
 MFDRHTSLVGCQVIHYRTDEYQKWL L LVGISAQQNRVVGAMQLYSVDRKVSQPIEGHAAAFKMEGNA
 KPATLFCFAVRNPTGGKLIIEVGQPAAGNQPFVKKAVDVFFPPEAQNDPFPVAMQIGAKHGVIYLITKYG
 YLHLYDLESGVCICMNRISADTIFVTAPHKPTSGIIGVNNKKGQVLSVCVEEDNIVNYATNVLQNPDLGLR
 LAVRSNLAGAELFVRKFNTLFAQGSYAEAAKVAASAPKGILRTRETQKQFQSIQAQSGQASPLLQYFGI
 LLDQGGQNLKLESLELCHLVLQQGRKQLEKWLKEDKLECSEELGDLVKTTPMLALSIVLRANVPSKVIQ
 CFAETGQFQKIVLYAKKVGYPDWIFLLRGVMKISPEQGLQFSRMLVQDEEPLANISQIVDIFMENSLIQ
 QCTSFLLDALKNNRPAEGLLQTWLLEMNLVHAPQVADAILGNKMFTHYDRAHIAQLCEKAGLLQQALEHY
 TDLYDIKRAVHHTHLLNPEWLVNFFGSLSVEDSVECLHAMLSANIRQNLQLCVQVASKYHEQLGTQALVE
 LFESFKSYKGLFYFLGSIVNFSQDPDVHLKYIQAACKTGQIKEVERICRESSCYNPERVKNFLKEAKLTD
 QLPLIIVCDRFGFVHDLVLYLRNNLQRYIEIYVQKVNPSRTPAVIGLLDVCSEEVIKHLIMAVRGQF
 STDELVAEVEKRNRLKLLPWLESQIQEGCEEPATHNALAKIYIDSNNSPECFLRENAYDSSVVGRYCE
 KRDPHLACVAYERGQCDLELIKVCNENSLFKSEARYLVCRKDPPELWAHVLEETNPSRRQLIDQVQTALS
 ETRDPEEISVTVKAFMTADLPNELIELLEKIVLDNSVFSEHRNLQNLILITAIKADRTRVMEYISRLDNY
 DALDIASIAVSSALYEEAFTVFHKFDMNASAIQVLIHIGNLDRAYEFAERCNEPAVWSQLAQAQLQKDL
 VKEAINSIRGDDPSSYLEVVQSASRSNNWEDLVKFLQMARKKGRESYIETELIFALAKTSRVSELEDFI
 NGPNNNAHIQQVGDRCYEEGMYEAAKLLYSNVSNFARLASTLVHLGEYQAAVDNSRKASSTRTWKEVCFAC
 MDGQEFRFAQLCGLHIVIHADLEELMCYYQDRGYFEELILLLEAALGLERAHMGMFTELAIFYSKFKPQ
 KMLEHLELWFSRVNIPKVLRAAEQAHLWAEVFLYDKYEEYDNAVLTMMSPTEAWKEGQFKDIITKVAN
 VELCYRALQFYLDYKPLLINDLLLVSRLDHTWTVSFFSKAGQLPLVKPYLRSVQSHNNKSVNEALNHL
 LTEEEDYQGLRASIDAYDNFDNISLAQQLEKHQLMEFRCAIAYLYKGNWWAQSVELCKKDHLKYDAMQH
 AAESRDAELAQKLLQWFLEEGKRECFAACLFTCYDLLRPDMVLELAWRHNLDLAMPYFIQVMREYLSKV
 DKLDALESLRKQEEHVTEPAPLVDFDFGHE

TRTRPLEQKLISEEDLAANDILDYKDDDDKV

Tag: C-Myc/DDK

Predicted MW: 186.9 kDa

Concentration: >0.05 µg/µL as determined by microplate BCA method

Purity: > 80% as determined by SDS-PAGE and Coomassie blue staining

Buffer: 25 mM Tris-HCl, 100 mM glycine, pH 7.3, 10% glycerol

Preparation: Recombinant protein was captured through anti-DDK affinity column followed by conventional chromatography steps.

Note: For testing in cell culture applications, please filter before use. Note that you may experience some loss of protein during the filtration process.

Storage: Store at -80°C.

Stability: Stable for 12 months from the date of receipt of the product under proper storage and handling conditions. Avoid repeated freeze-thaw cycles.

RefSeq: [NP_009029](#)

Locus ID: 8218

UniProt ID: [P53675](#)

RefSeq Size: 5525

Cytogenetics: 22q11.21

RefSeq ORF: 4920

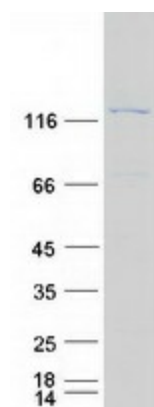
Synonyms: CHC22; CLH22; CLTCL; CLTD

Summary: This gene is a member of the clathrin heavy chain family and encodes a major protein of the polyhedral coat of coated pits and vesicles. Chromosomal aberrations involving this gene are associated with meningioma, DiGeorge syndrome, and velo-cardio-facial syndrome. Multiple transcript variants encoding different isoforms have been found for this gene. [provided by RefSeq, Jun 2009]

Protein Families: Druggable Genome

Protein Pathways: Endocytosis, Huntington's disease, Lysosome

Product images:



Coomassie blue staining of purified CLTCL1 protein (Cat# [TP324639]). The protein was produced from HEK293T cells transfected with CLTCL1 cDNA clone (Cat# [RC224639]) using MegaTran 2.0 (Cat# [TT210002]).