

Product datasheet for **TP324634L**

MECR (NM_016011) Human Recombinant Protein

Product data:

Product Type: Recombinant Proteins

Description: Recombinant protein of human mitochondrial trans-2-enoyl-CoA reductase (MECR), nuclear gene encoding mitochondrial protein, transcript variant 1, 1 mg

Species: Human

Expression Host: HEK293T

Expression cDNA Clone or AA Sequence: >RC224634 protein sequence
Red=Cloning site **Green**=Tags(s)

MWVCSTLWRVRTPARQWRGLLPASGCHGPAASSYSASAEPARVRALVYGHGDPKAVWELKNLELAAVRG
SDVRVKMLAAPINPSDINMIQGNYGLLPELPAVGGNEGVAQVAVGSNVTGLKPGDWVIPANAGLGTWRT
EAVFSEEALIQVPSDIPLQSAATLGVNPTAYRMLMDFEQLPQGSVIQNASNSGVGQAVIQIAAALGLR
TINVVRDRPDIQKLSDRKSLGAEHVITEEELRRPEMKNFFKDMQPRLALNCVGGKSTELLRQLARGG
TMVTYGGMAKQPWVASVLLIFKDLKLRGFWLSQWKDHPDQFKELILTCLDIRRGQLTAPACSQVPL
QDYQSALEASMKPFISSKQILTM

TRTRPLEQKLISEEDLAANDILDYKDDDDKV

Tag: C-Myc/DDK

Predicted MW: 40.3 kDa

Concentration: >0.05 µg/µL as determined by microplate BCA method

Purity: > 80% as determined by SDS-PAGE and Coomassie blue staining

Buffer: 25 mM Tris-HCl, 100 mM glycine, pH 7.3, 10% glycerol

Preparation: Recombinant protein was captured through anti-DDK affinity column followed by conventional chromatography steps.

Note: For testing in cell culture applications, please filter before use. Note that you may experience some loss of protein during the filtration process.

Storage: Store at -80°C.

Stability: Stable for 12 months from the date of receipt of the product under proper storage and handling conditions. Avoid repeated freeze-thaw cycles.

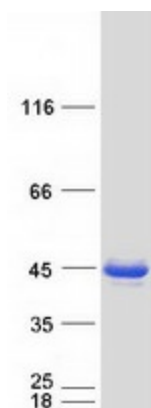
RefSeq: [NP_057095](#)



[View online »](#)

Locus ID:	51102
UniProt ID:	Q9BV79
RefSeq Size:	2539
Cytogenetics:	1p35.3
RefSeq ORF:	1119
Synonyms:	CGI-63; DYTOABG; ETR1; FASN2B; NRBF1
Summary:	The protein encoded by this gene is an oxidoreductase that catalyzes the last step in mitochondrial fatty acid synthesis. Defects in this gene are a cause of childhood-onset dystonia and optic atrophy. [provided by RefSeq, Mar 2017]
Protein Families:	Druggable Genome
Protein Pathways:	Fatty acid elongation in mitochondria, Metabolic pathways

Product images:



Coomassie blue staining of purified MECR protein (Cat# [TP324634]). The protein was produced from HEK293T cells transfected with MECR cDNA clone (Cat# [RC224634]) using MegaTran 2.0 (Cat# [TT210002]).