

Product datasheet for **TP324634**

MECR (NM_016011) Human Recombinant Protein

Product data:

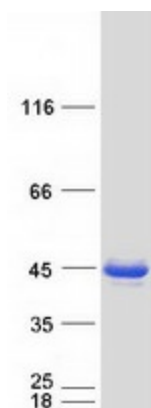
Product Type:	Recombinant Proteins
Description:	Recombinant protein of human mitochondrial trans-2-enoyl-CoA reductase (MECR), nuclear gene encoding mitochondrial protein, transcript variant 1, 20 µg
Species:	Human
Expression Host:	HEK293T
Expression cDNA Clone or AA Sequence:	>RC224634 protein sequence Red =Cloning site Green =Tags(s)
	<p>MWVCSTLWRVRTPARQWRGLLPASGCHGPAASSYSASAEPARVRALVYGHGDPKAVWELKNLELAAVRG SDVRVKMLAAPINPSDINMIQGNYGLLPELPAVGGNEGVAQVAVGSNVTGLKPGDWVIPANAGLGTWRT EAVFSEEALIQVPSDIPLQSAATLGVNPTAYRMLMDFEQLPQGDSVIQNASNSGVGQAVIQIAAALGLR TINVVRDRPDIQKLSDRKSLGAEHVITEEELRRPEMKNFFKDMQPRLALNCVGGKSTELLRQLARGG TMVTYGGMAKQPWVASVLLIFKDLKLRGFWLSQWKKDHSPDQFKELILTCLDIRRGQLTAPACSQVPL QDYQSALEASMKPFISSKQILTM</p> <p>TRTRPLEQKLISEEDLAANDILDYKDDDDKV</p>
Tag:	C-Myc/DDK
Predicted MW:	40.3 kDa
Concentration:	>0.05 µg/µL as determined by microplate BCA method
Purity:	> 80% as determined by SDS-PAGE and Coomassie blue staining
Buffer:	25 mM Tris-HCl, 100 mM glycine, pH 7.3, 10% glycerol
Preparation:	Recombinant protein was captured through anti-DDK affinity column followed by conventional chromatography steps.
Note:	For testing in cell culture applications, please filter before use. Note that you may experience some loss of protein during the filtration process.
Storage:	Store at -80°C.
Stability:	Stable for 12 months from the date of receipt of the product under proper storage and handling conditions. Avoid repeated freeze-thaw cycles.
RefSeq:	<u>NP_057095</u>



[View online »](#)

Locus ID:	51102
UniProt ID:	Q9BV79
RefSeq Size:	2539
Cytogenetics:	1p35.3
RefSeq ORF:	1119
Synonyms:	CGI-63; DYTOABG; ETR1; FASN2B; NRBF1
Summary:	The protein encoded by this gene is an oxidoreductase that catalyzes the last step in mitochondrial fatty acid synthesis. Defects in this gene are a cause of childhood-onset dystonia and optic atrophy. [provided by RefSeq, Mar 2017]
Protein Families:	Druggable Genome
Protein Pathways:	Fatty acid elongation in mitochondria, Metabolic pathways

Product images:



Coomassie blue staining of purified MECR protein (Cat# TP324634). The protein was produced from HEK293T cells transfected with MECR cDNA clone (Cat# [RC224634]) using MegaTran 2.0 (Cat# [TT210002]).