

Product datasheet for **TP324622M**

Clathrin light chain (CLTB) (NM_007097) Human Recombinant Protein

Product data:

Product Type:	Recombinant Proteins
Description:	Recombinant protein of human clathrin, light chain (Lcb) (CLTB), transcript variant 2, 100 µg
Species:	Human
Expression Host:	HEK293T
Expression cDNA Clone or AA Sequence:	>RC224622 representing NM_007097 Red =Cloning site Green =Tags(s)
	 MADDFGFFSSSESGAPEAAEEDPAAAFLAQQESEIAGIENDEGFGAPAGSHAAPAQPGPTSGAGSEDMGT TVNGDVFQEANGPADGYAAIAQADRLTQEPESIRKWREEQRKRLQELDAASKVTEQEWREKAKKDLEEWN QRQSEQVEKNKINNRIADKAFYQQPDADIIGYVASEEAFVKESKEETPGTEWEKVAQLCDFNPKSSKQCK DVSRLRSVLMMLKQTPLSR TRTRPLEQKLISEEDLAANDILDYKDDDDKV
Tag:	C-Myc/DDK
Predicted MW:	25 kDa
Concentration:	>0.05 µg/µL as determined by microplate BCA method
Purity:	> 80% as determined by SDS-PAGE and Coomassie blue staining
Buffer:	25 mM Tris-HCl, 100 mM glycine, pH 7.3, 10% glycerol
Preparation:	Recombinant protein was captured through anti-DDK affinity column followed by conventional chromatography steps.
Note:	For testing in cell culture applications, please filter before use. Note that you may experience some loss of protein during the filtration process.
Storage:	Store at -80°C.
Stability:	Stable for 12 months from the date of receipt of the product under proper storage and handling conditions. Avoid repeated freeze-thaw cycles.
RefSeq:	<u>NP_009028</u>
Locus ID:	1212
UniProt ID:	<u>P09497</u>



[View online »](#)

RefSeq Size: 1184

Cytogenetics: 5q35.2

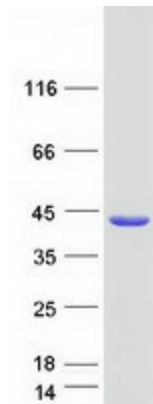
RefSeq ORF: 687

Synonyms: LCB

Summary: Clathrin is a large, soluble protein composed of heavy and light chains. It functions as the main structural component of the lattice-type cytoplasmic face of coated pits and vesicles which entrap specific macromolecules during receptor-mediated endocytosis. This gene encodes one of two clathrin light chain proteins which are believed to function as regulatory elements. Alternative splicing results in multiple transcript variants. [provided by RefSeq, Jul 2008]

Protein Pathways: Endocytosis, Huntington's disease, Lysosome

Product images:



Coomassie blue staining of purified CLTB protein (Cat# [TP324622]). The protein was produced from HEK293T cells transfected with CLTB cDNA clone (Cat# [RC224622]) using MegaTran 2.0 (Cat# [TT210002]).