

Product datasheet for TP324620M

ARSL (NM_000047) Human Recombinant Protein

Product data:

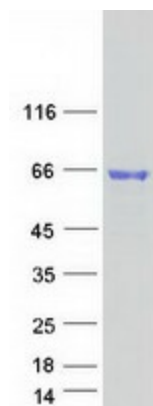
Product Type:	Recombinant Proteins
Description:	Recombinant protein of human arylsulfatase E (chondrodysplasia punctata 1) (ARSE), 100 µg
Species:	Human
Expression Host:	HEK293T
Expression cDNA Clone or AA Sequence:	>RC224620 protein sequence Red =Cloning site Green =Tags(s)
	<p>MLHLHHSCLCFRSWLPAMLAVLLSLAPSASSDISASRPNILLMADDLGIGDVGCGYGNNTMRTPNIDRLA EDGVKLTQHISAASLCTPSRAAFLTGRYPVRSGMVSSIGYRVLQWTGASGGLPTNETTFAKILKEKGYAT GLIGKWHLGLNCESASDHCHHPLHHGFDHFGYMPFSLMGDCARWELSEKRVNLEQKLNFLFQVLALVALT LVAGKLTHTLIPVSWMPVIWSALSALLASSYFVGALIVHADCFLMRNHTITEQPMCFQRTTPLILQEVA SFLKRNKHGPFLLFVSFLHVHIPLITMENFLGKSLHGLYGDNVEEMDWMVGRILDTLDEGLSNSTLIYF TSDHGGLENQLGNTQYGGWNGIYKGGKMGWEGGIRVPGIFRWPGVLPAGRVIGEPTSLMDVFPTVVR LAGGEVPQDRVIDGQDLLPLLLGTAQHSDHEFLMHYCERFLHAARWHQRDRGTMWKVHFVTPVFQPEGAG ACYGRKVCPCFGEKVHHDPPLFDLSRDPSETHILTPASEPVFYQVMERVQQAVWEHQRTLSPVPLQLD RLGNIWRPWLQPCCGPFPLCWCLREDDPQ</p> <p>TRTRPLEQKLISEEDLAANDILDYKDDDDKV</p>
Tag:	C-Myc/DDK
Predicted MW:	62.2 kDa
Concentration:	>0.05 µg/µL as determined by microplate BCA method
Purity:	> 80% as determined by SDS-PAGE and Coomassie blue staining
Buffer:	25 mM Tris-HCl, 100 mM glycine, pH 7.3, 10% glycerol
Preparation:	Recombinant protein was captured through anti-DDK affinity column followed by conventional chromatography steps.
Note:	For testing in cell culture applications, please filter before use. Note that you may experience some loss of protein during the filtration process.
Storage:	Store at -80°C.



[View online »](#)

Stability:	Stable for 12 months from the date of receipt of the product under proper storage and handling conditions. Avoid repeated freeze-thaw cycles.
RefSeq:	<u>NP_000038</u>
Locus ID:	415
UniProt ID:	<u>P51690</u>
RefSeq Size:	2220
Cytogenetics:	Xp22.33
RefSeq ORF:	1767
Synonyms:	ARSE; ASE; CDPX; CDPX1; CDPXR
Summary:	Arylsulfatase E is a member of the sulfatase family. It is glycosylated postranslationally and localized to the golgi apparatus. Sulfatases are essential for the correct composition of bone and cartilage matrix. X-linked chondrodysplasia punctata, a disease characterized by abnormalities in cartilage and bone development, has been linked to mutations in this gene. Alternative splicing results in multiple transcript variants. A pseudogene related to this gene is located on the Y chromosome. [provided by RefSeq, Sep 2013]
Protein Families:	Druggable Genome, Transmembrane

Product images:



Coomassie blue staining of purified ARSE protein (Cat# [TP324620]). The protein was produced from HEK293T cells transfected with ARSE cDNA clone (Cat# [RC224620]) using MegaTran 2.0 (Cat# [TT210002]).