

## Product datasheet for TP324620L

### ARSL (NM\_000047) Human Recombinant Protein

#### Product data:

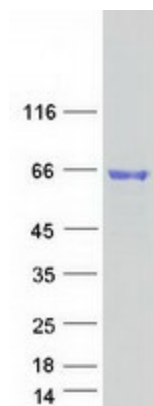
Product Type:	Recombinant Proteins
Description:	Recombinant protein of human arylsulfatase E (chondrodysplasia punctata 1) (ARSE), 1 mg
Species:	Human
Expression Host:	HEK293T
Expression cDNA Clone or AA Sequence:	>RC224620 protein sequence <b>Red</b> =Cloning site <b>Green</b> =Tags(s)
	<p>MLHLHHSCLCFRSWLPAMLAVLLSLAPSASSDISASRPNILLMADDLGIGDVGCYGNNTMRTPNIDRLA EDGVKLTQHISAASLCTPSRAAFLTGRYPVRSGMVSSIGYRVLQWTGASGGLPTNETTFAKILKEKGYAT GLIGKWHLGLNCESASDHCHHPLHHGFDHFGYMPFSLMGDCARWELSEKRVNLEQKLNFLFQVLALVALT LVAGKLTHTLIPVSWMPVIWSALSAVLLASSYFVGALIVHADCFLMRNHTITEQPMCFQRTTPLILQEVA SFLKRNKHGPFLLFVSFLHVHIPLITMENFLGKSLHGLYGDNVEEMDWMVGRILDTLDVEGLSNSTLIYF TSDHGGLENQLGNTQYGGWNGIYKGGKGMGGWEGGIRVPGIFRWPGVLPAGRVIGEPTSLMDVFPTVVR LAGGEVPQDRVIDGQDLLPLLLGTAQHSDHEFLMHYCERFLHAARWHQRDRGTMWKVHFVTPVFQPEGAG ACYGRKVCPCFGEKVHHDPPLFDLSRDPSETHILTPASEPVFYQVMERVQQAVWEHQRTLSPVPLQLD RLGNIWRPWLQPCCGPFPLCWCLREDDPQ</p> <p><b>TRTRPLEQKLISEEDLAANDILDYKDDDDKV</b></p>
Tag:	C-Myc/DDK
Predicted MW:	62.2 kDa
Concentration:	>0.05 µg/µL as determined by microplate BCA method
Purity:	> 80% as determined by SDS-PAGE and Coomassie blue staining
Buffer:	25 mM Tris-HCl, 100 mM glycine, pH 7.3, 10% glycerol
Preparation:	Recombinant protein was captured through anti-DDK affinity column followed by conventional chromatography steps.
Note:	For testing in cell culture applications, please filter before use. Note that you may experience some loss of protein during the filtration process.
Storage:	Store at -80°C.



[View online »](#)

<b>Stability:</b>	Stable for 12 months from the date of receipt of the product under proper storage and handling conditions. Avoid repeated freeze-thaw cycles.
<b>RefSeq:</b>	<a href="#">NP_000038</a>
<b>Locus ID:</b>	415
<b>UniProt ID:</b>	<a href="#">P51690</a>
<b>RefSeq Size:</b>	2220
<b>Cytogenetics:</b>	Xp22.33
<b>RefSeq ORF:</b>	1767
<b>Synonyms:</b>	ARSE; ASE; CDPX; CDPX1; CDPXR
<b>Summary:</b>	Arylsulfatase E is a member of the sulfatase family. It is glycosylated postranslationally and localized to the golgi apparatus. Sulfatases are essential for the correct composition of bone and cartilage matrix. X-linked chondrodysplasia punctata, a disease characterized by abnormalities in cartilage and bone development, has been linked to mutations in this gene. Alternative splicing results in multiple transcript variants. A pseudogene related to this gene is located on the Y chromosome. [provided by RefSeq, Sep 2013]
<b>Protein Families:</b>	Druggable Genome, Transmembrane

### Product images:



Coomassie blue staining of purified ARSE protein (Cat# [TP324620]). The protein was produced from HEK293T cells transfected with ARSE cDNA clone (Cat# [RC224620]) using MegaTran 2.0 (Cat# [TT210002]).