

Product datasheet for **TP324614M**

RASSF3 (NM_178169) Human Recombinant Protein

Product data:

Product Type:	Recombinant Proteins
Description:	Recombinant protein of human Ras association (RalGDS/AF-6) domain family member 3 (RASSF3), 100 µg
Species:	Human
Expression Host:	HEK293T
Expression cDNA Clone or AA Sequence:	>RC224614 protein sequence Red =Cloning site Green =Tags(s)

MSSGYSSLEEDAEDFFFTARTSFFRRAPQGKPRSGQQDVEKEKETHSYLSKEEIKEKVHKYNLAVTDKLLK
MTLNSNGIYTGFIKVMELCKPPQTSPNSGKLSPPSSNGCMNTLHISSTNTVGEVIEALLKKFLVTESPAK
FALYKRCHREDQVYACKLSDREHPLYLRLVAGPRTDTLSFVLRHEHEIGEWFAFSLPELQNFLRILDKEED
EQLQNLKRRYTAYRQKLEELREVWKP

TRTRPLEQKLISEEDLAANDILDYKDDDDKV

Tag:	C-Myc/DDK
Predicted MW:	27.4 kDa
Concentration:	>0.05 µg/µL as determined by microplate BCA method
Purity:	> 80% as determined by SDS-PAGE and Coomassie blue staining
Buffer:	25 mM Tris-HCl, 100 mM glycine, pH 7.3, 10% glycerol
Preparation:	Recombinant protein was captured through anti-DDK affinity column followed by conventional chromatography steps.
Note:	For testing in cell culture applications, please filter before use. Note that you may experience some loss of protein during the filtration process.
Storage:	Store at -80°C.
Stability:	Stable for 12 months from the date of receipt of the product under proper storage and handling conditions. Avoid repeated freeze-thaw cycles.
RefSeq:	NP_835463
Locus ID:	283349



[View online »](#)

UniProt ID: [Q86WH2](#)

RefSeq Size: 3492

Cytogenetics: 12q14.2

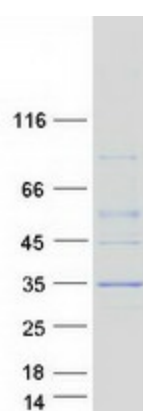
RefSeq ORF: 714

Synonyms: RASSF5

Summary: The RAS oncogene (MIM 190020) is mutated in nearly one-third of all human cancers. Members of the RAS superfamily are plasma membrane GTP-binding proteins that modulate intracellular signal transduction pathways. A subfamily of RAS effectors, including RASSF3, share a RAS association (RA) domain.[supplied by OMIM, Jul 2003]

Protein Families: Druggable Genome

Product images:



Coomassie blue staining of purified RASSF3 protein (Cat# [TP324614]). The protein was produced from HEK293T cells transfected with RASSF3 cDNA clone (Cat# [RC224614]) using MegaTran 2.0 (Cat# [TT210002]).