

## Product datasheet for **TP324600M**

### **MF12 (MELTF) (NM\_005929) Human Recombinant Protein**

#### **Product data:**

<b>Product Type:</b>	Recombinant Proteins
<b>Description:</b>	Recombinant protein of human antigen p97 (melanoma associated) identified by monoclonal antibodies 133.2 and 96.5 (MF12), transcript variant 1, 100 µg
<b>Species:</b>	Human
<b>Expression Host:</b>	HEK293T
<b>Expression cDNA Clone or AA Sequence:</b>	>RC224600 representing NM_005929 <b>Red</b> =Cloning site <b>Green</b> =Tags(s)

MRGPSGALWLLLALRTVLGGMEVRWCATSDPEQHKCGNMSEAFREAGIQPSLLCVRGTSADHCVQLIAAQ  
EADAITLDGGAIYEAGKEHGLKPVVGVEYDQEVGTSYYAVAVRRSSHVTIDTLKGVKSCHTGINRTV  
NVPVGYLVESGRLSVMGCDVLKAVSDYFGGSCVPGAGETSYSSELCRLCRGDSSGEGVCDKSPLE  
RYYDYSGAFRCLAEGAGDVAFVKHSTVLENTDGTKLPSWGQALLSQDFELLCRDGSRADVTEWRQ  
CHLARVPAHAVVRADTDGGLIFRLLNEGQRLFSHEGSSFQMFSSAYGQKDLLFKDSTSELVPIATQ  
TYEAWLGHEYLHAMKGLLCDPNRPPYLRLWCVLSTPEIQKCGDMAVAFRRQRLKPEIQCVSAKSP  
QHCMERIQAEQVDAVTLSGEDIYTAGKTYGLVPAAGEHYAPEDSSNSYVAVRRDSSHAFTLDEL  
RGKRSCHAGFGSPAGWDVPV GALIQRGFIRPKDCDVLTA VSEFFNASCVPVNNPKNYPSSLCAL  
CVGDEQGRNKCVGNSQERYGYRGAF RCLVENAGDVAFVRHTTVFDNTNGHNSEPWAAELRSE  
DYELLCPNGARAEVSQFAACNLAQIPPHAVMVR PDTNIFTVYGLLDKAQDLFGDDHNKNGFKM  
FDSSNYHGQDLLFKDATVRAVPVGEKTTYRGWLGLDYVAA LEGMSSQQCSGAAAPAPGAPLL  
PLLLPALAARLLPPAL

**TRTRPLEQKLISEEDLAANDILDYKDDDDKV**

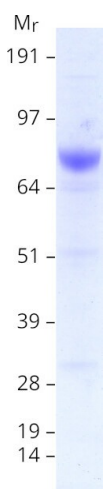
<b>Tag:</b>	C-Myc/DDK
<b>Predicted MW:</b>	78.2 kDa
<b>Concentration:</b>	>0.05 µg/µL as determined by microplate BCA method
<b>Purity:</b>	> 80% as determined by SDS-PAGE and Coomassie blue staining
<b>Buffer:</b>	25 mM Tris-HCl, 100 mM glycine, pH 7.3, 10% glycerol
<b>Preparation:</b>	Recombinant protein was captured through anti-DDK affinity column followed by conventional chromatography steps.
<b>Note:</b>	For testing in cell culture applications, please filter before use. Note that you may experience some loss of protein during the filtration process.



[View online »](#)

<b>Storage:</b>	Store at -80°C.
<b>Stability:</b>	Stable for 12 months from the date of receipt of the product under proper storage and handling conditions. Avoid repeated freeze-thaw cycles.
<b>RefSeq:</b>	<a href="#">NP_005920</a>
<b>Locus ID:</b>	4241
<b>UniProt ID:</b>	<a href="#">P08582</a>
<b>RefSeq Size:</b>	2377
<b>Cytogenetics:</b>	3q29
<b>RefSeq ORF:</b>	2214
<b>Synonyms:</b>	CD228; MAP97; MFI2; MTf; MTF1
<b>Summary:</b>	The protein encoded by this gene is a cell-surface glycoprotein found on melanoma cells. The protein shares sequence similarity and iron-binding properties with members of the transferrin superfamily. The importance of the iron binding function has not yet been identified. This gene resides in the same region of chromosome 3 as members of the transferrin superfamily. Alternative splicing results in two transcript variants. [provided by RefSeq, Jul 2008]
<b>Protein Families:</b>	Druggable Genome

### Product images:



Coomassie blue staining of purified MELTF protein (Cat# [TP324600]). The protein was produced from HEK293T cells transfected with MELTF cDNA clone (Cat# [RC224600]) using MegaTran 2.0 (Cat# [TT210002]).