

Product datasheet for TP324600

MF12 (MELTF) (NM_005929) Human Recombinant Protein

Product data:

Product Type:	Recombinant Proteins
Description:	Recombinant protein of human antigen p97 (melanoma associated) identified by monoclonal antibodies 133.2 and 96.5 (MF12), transcript variant 1, 20 µg
Species:	Human
Expression Host:	HEK293T
Expression cDNA Clone or AA Sequence:	>RC224600 representing NM_005929 Red=Cloning site Green=Tags(s)

MRGPSGALWLLLALRTVLGGMEVRWCATSDPEQHKCGNMSEAFREAGIQPSLLCVRGTSADHCVQLIAAQ
EADAITLDGGAIYEAGKEHGLKPVVGEVYDQEVGTSYYAVAVRRSSHVTIDTLKGVKSCHTGINRTVGW
NVPVGYLVESGRLSVMGCDVLKAVSDYFGGSCVPGAGETSYSESLCRLCRGDSSGEGVCDKSPLERYDY
SGAFRCLAEGAGDVAFVKHSTVLENTDGKTLPSWGQALLSQDFELLCRDGSRADVTEWRQCHLARVPAHA
VVRADTDGGLIFRLLNEGQRLFSHEGSSFQMFSSAYGQKDLLFKDSTSELVPIATQTYEAWLGHEYLH
AMKGLLCDPNRPPYLRLWCVLSTPEIQKCGDMAVAFRRQRLKPEIQCVSAKSPQHCMERIQAEQVDAVTL
SGEDIYTAGKTYGLVPAAGEHYAPEDSSNSYVAVRRDSSHAFTLDELGRKRSCHAGFGSPAGWDVPV
GALIQRGFIRPKDCDVLTAVERSEFFNASCVPVNNPKNYPSSLCALCVGDEQGRNKCVGNSQERYGYRGAF
RCLVENAGDVAFVRHTTVFDNTNGHNSEPWAAELRSEDYELLCPNGARAEVSQFAACNLAQIPPHAVMVR
PDTNIFTVYGLLDKAQDLFGDDHKNKNGFKMFDSSNYHGQDLLFKDATVRAVPVGEKTTYRGWLGLDYVAA
LEGMSSQQCSGAAAPAPGAPLLPLLLPALAARLLPPAL

TRTRPLEQKLISEEDLAANDILDYKDDDDKV

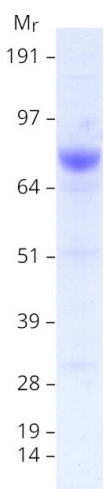
Tag:	C-Myc/DDK
Predicted MW:	78.2 kDa
Concentration:	>0.05 µg/µL as determined by microplate BCA method
Purity:	> 80% as determined by SDS-PAGE and Coomassie blue staining
Buffer:	25 mM Tris-HCl, 100 mM glycine, pH 7.3, 10% glycerol
Preparation:	Recombinant protein was captured through anti-DDK affinity column followed by conventional chromatography steps.
Note:	For testing in cell culture applications, please filter before use. Note that you may experience some loss of protein during the filtration process.



[View online »](#)

Storage:	Store at -80°C.
Stability:	Stable for 12 months from the date of receipt of the product under proper storage and handling conditions. Avoid repeated freeze-thaw cycles.
RefSeq:	NP_005920
Locus ID:	4241
UniProt ID:	P08582
RefSeq Size:	2377
Cytogenetics:	3q29
RefSeq ORF:	2214
Synonyms:	CD228; MAP97; MFI2; MTf; MTF1
Summary:	The protein encoded by this gene is a cell-surface glycoprotein found on melanoma cells. The protein shares sequence similarity and iron-binding properties with members of the transferrin superfamily. The importance of the iron binding function has not yet been identified. This gene resides in the same region of chromosome 3 as members of the transferrin superfamily. Alternative splicing results in two transcript variants. [provided by RefSeq, Jul 2008]
Protein Families:	Druggable Genome

Product images:



Coomassie blue staining of purified MELTF protein (Cat# TP324600). The protein was produced from HEK293T cells transfected with MELTF cDNA clone (Cat# [RC224600]) using MegaTran 2.0 (Cat# [TT210002]).