

## Product datasheet for **TP324590**

### GPR141 (NM\_181791) Human Recombinant Protein

#### Product data:

Product Type:	Recombinant Proteins
Description:	Recombinant protein of human G protein-coupled receptor 141 (GPR141), 20 µg
Species:	Human
Expression Host:	HEK293T
Expression cDNA Clone or AA Sequence:	>RC224590 representing NM_181791 <b>Red</b> =Cloning site <b>Green</b> =Tags(s)
	 MPGHNTSRNSSCDPIVTPHLISLYFIVLIGGLVGVISILFLLVKMNTSRVTTMAVINLWVHVSFLLTVP FRLTYLIKKTWMFGLPFCKFVSAMLHIHMYLTFLFYWILVTRYLIFFKCKDKVEFYRKLHAVAASAGMW TLVIVVPLVVSRYGIHEEYNEEHCFKFHKLAYTYVKIINYMIVIFVIAVAVILLVFQVFIIMLMVQK LRHLLSHQEFWAQLKNLFFIGVILVCFLPYQFFRIYYLNVVTHSNACNSKVAFYNEIFLSVTAISCYDL LLFVFGGSHWFKQKIIGLWNCVLCR  <b>TRTRPLEQKLISEEDLAANDILDYKDDDDKV</b>
Tag:	C-Myc/DDK
Predicted MW:	35.3 kDa
Concentration:	>0.05 µg/µL as determined by microplate BCA method
Purity:	> 80% as determined by SDS-PAGE and Coomassie blue staining
Buffer:	25 mM Tris-HCl, 100 mM glycine, pH 7.3, 10% glycerol
Preparation:	Recombinant protein was captured through anti-DDK affinity column followed by conventional chromatography steps.
Note:	For testing in cell culture applications, please filter before use. Note that you may experience some loss of protein during the filtration process.
Storage:	Store at -80°C.
Stability:	Stable for 12 months from the date of receipt of the product under proper storage and handling conditions. Avoid repeated freeze-thaw cycles.
RefSeq:	<a href="#">NP_861456</a>
Locus ID:	353345



[View online »](#)

UniProt ID: [Q7Z602](#)

RefSeq Size: 918

Cytogenetics: 7p14.1

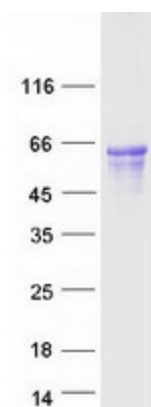
RefSeq ORF: 915

Synonyms: PGR13

Summary: GPR141 is a member of the rhodopsin family of G protein-coupled receptors (GPRs) (Fredriksson et al., 2003 [PubMed 14623098]).[supplied by OMIM, Mar 2008]

Protein Families: Druggable Genome, Transmembrane

### Product images:



Coomassie blue staining of purified GPR141 protein (Cat# TP324590). The protein was produced from HEK293T cells transfected with GPR141 cDNA clone (Cat# [RC224590]) using MegaTran 2.0 (Cat# [TT210002]).