

## Product datasheet for **TP324563L**

### EXOC6B (NM\_015189) Human Recombinant Protein

#### Product data:

Product Type:	Recombinant Proteins
Description:	Recombinant protein of human exocyst complex component 6B (EXOC6B), 1 mg
Species:	Human
Expression Host:	HEK293T
Expression cDNA Clone or AA Sequence:	>RC224563 representing NM_015189 <b>Red</b> =Cloning site <b>Green</b> =Tags(s)

MER GKMAE AESLE TAAE HERILREIESTDTACIGPTLR SVYDGE EHGRFMEKLETRIRNHDREIEKMCNF  
HYQGFVDSITELLKVRGEAQKLKNQVTD TNRLQHEGKELVIAMEELKQCRLQQRNISATVDKMLCLPV  
LEMYSKLRDQMKT KRHYPA LKTL EHL EHTYLPQVSHYRFCKVMVDNIPKLREEIKDVMSDLKDFLESIR  
KHSDKIGETAMKQAQQQRNLDNIVLQQPRIGSKRKS KDAYIIFDTEIESTSPKSEQDSGILDVEDEEDD  
EEVPGAQDLVDFSPVYRCLHIYSVLGARETFENYYRKQRRKQARLVLP PPSNMHETLDGYRKYFNQIVGF  
FVVEDHILHTTQGLVNRAYIDELWEMALSKTIAALRTHSSYCDPNLVLDLKNLIVLFADTLQVYGFPVN  
QLFDMLEIRDQYSETLLKKWAGIFRNILSDNYSPIPTSEEMYKKVVGQFPFQDIELEKQFPFKKFPF  
SEFVPKVNQIKEFIYACLKFSEDLHLSSTEVD DMIRKSTNLLLTRT LSNLQNVIKRKNIGLTELQII  
INTTHLEKSCKYLEEFITNITNVL PETVHTTKLYGTTTFKDARHAAEEIYTNLNQKIDQFLQLADYDWM  
TGD LGNKASDYLVDLIAFLRSTFAVFTHLPGKVAQTACMSACKHLATSLMQLLLEAEVRQLTLGALQQFN  
LDVRECEQFARSGPVPGFQEDTLQLAFIDLRQLLDLFIQWDWSTYLADYGQPNCKYL RVNPVTALTLEK  
MKDTSRKNNMFAQFRKNERDKQKLIDTVAKQLRGLISSHHS

**TR**TRPLEQKLISEEDLAANDILDYKDDDDKV

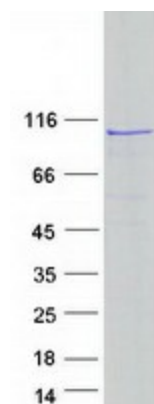
Tag:	C-Myc/DDK
Predicted MW:	94 kDa
Concentration:	>0.05 µg/µL as determined by microplate BCA method
Purity:	> 80% as determined by SDS-PAGE and Coomassie blue staining
Buffer:	25 mM Tris-HCl, 100 mM glycine, pH 7.3, 10% glycerol
Preparation:	Recombinant protein was captured through anti-DDK affinity column followed by conventional chromatography steps.
Note:	For testing in cell culture applications, please filter before use. Note that you may experience some loss of protein during the filtration process.



[View online »](#)

<b>Storage:</b>	Store at -80°C.
<b>Stability:</b>	Stable for 12 months from the date of receipt of the product under proper storage and handling conditions. Avoid repeated freeze-thaw cycles.
<b>RefSeq:</b>	<a href="#">NP_056004</a>
<b>Locus ID:</b>	23233
<b>UniProt ID:</b>	<a href="#">Q9Y2D4</a>
<b>RefSeq Size:</b>	2594
<b>Cytogenetics:</b>	2p13.2
<b>RefSeq ORF:</b>	2433
<b>Synonyms:</b>	SEC15B; SEC15L2; SEMDJL3
<b>Summary:</b>	This gene encodes a protein which is a part of the evolutionarily conserved exocyst, a multimeric protein complex necessary for exocytosis, which in turn, is crucial for cell growth, polarity and migration. Disruption of this gene may be associated with phenotypes exhibiting multiple symptoms including intellectual disability and developmental delay (DD). [provided by RefSeq, Jun 2016]

## Product images:



Coomassie blue staining of purified EXOC6B protein (Cat# [TP324563]). The protein was produced from HEK293T cells transfected with EXOC6B cDNA clone (Cat# [RC224563]) using MegaTran 2.0 (Cat# [TT210002]).