

## Product datasheet for **TP324562**

### **C21ORF56 (SPATC1L) (NM\_032261) Human Recombinant Protein**

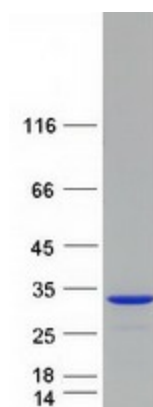
#### Product data:

Product Type:	Recombinant Proteins
Description:	Recombinant protein of human chromosome 21 open reading frame 56 (C21orf56), transcript variant 2, 20 µg
Species:	Human
Expression Host:	HEK293T
Expression cDNA Clone or AA Sequence:	>RC224562 protein sequence <b>Red</b> =Cloning site <b>Green</b> =Tags(s)
	 MVRPKKVCFSESSLPTGDRTRRSYYLNEIQSFAGA EKDARVVG EIAFQLDRRILAYVFPGVTRLYGFTVA NIPEKIEQTSTKSLDGSVDERKLR ELTQRYLALSARLEKLGYSRDVHPAFSEFLINTYGILKQRPDLRAN PLHSSPAALRKLVIDVPPKFLGDSLLLLNCLCELSKEDGKPLFAW  <b>TRTRPLEQKLISEEDLAANDILDYKDDDDKV</b>
Tag:	C-Myc/DDK
Predicted MW:	20.9 kDa
Concentration:	>0.05 µg/µL as determined by microplate BCA method
Purity:	> 80% as determined by SDS-PAGE and Coomassie blue staining
Buffer:	25 mM Tris-HCl, 100 mM glycine, pH 7.3, 10% glycerol
Preparation:	Recombinant protein was captured through anti-DDK affinity column followed by conventional chromatography steps.
Note:	For testing in cell culture applications, please filter before use. Note that you may experience some loss of protein during the filtration process.
Storage:	Store at -80°C.
Stability:	Stable for 12 months from the date of receipt of the product under proper storage and handling conditions. Avoid repeated freeze-thaw cycles.
RefSeq:	<a href="#">NP_115637</a>
Locus ID:	84221
UniProt ID:	<a href="#">Q9H0A9</a>



[View online »](#)

RefSeq Size:	1181
Cytogenetics:	21q22.3
RefSeq ORF:	558
Synonyms:	C21orf56

**Product images:**

Coomassie blue staining of purified SPATC1L protein (Cat# TP324562). The protein was produced from HEK293T cells transfected with SPATC1L cDNA clone (Cat# [RC224562]) using MegaTran 2.0 (Cat# [TT210002]).