

Product datasheet for **TP324539M**

LPP (NM_005578) Human Recombinant Protein

Product data:

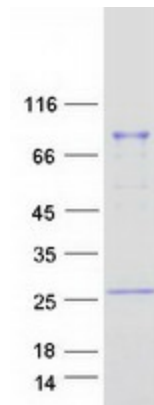
Product Type:	Recombinant Proteins
Description:	Recombinant protein of human LIM domain containing preferred translocation partner in lipoma (LPP), 100 µg
Species:	Human
Expression Host:	HEK293T
Expression cDNA Clone or AA Sequence:	>RC224539 protein sequence Red =Cloning site Green =Tags(s)
	<p>MSHPSWLPPKSTGEPLGHVPARMETTHSFGNPSISVSTQQPPKKFAPVWAPKPKYNPYKQPGGEGDFLPP PPPLDDSSALPSISGNFPPPPPLDEEAFKVQGNPGGKLEERRSSLD A EIDSLTILADLECSSPYKPR PPQSSTGSTASPPVSTPVTGHKRMVIPNQPLTATKSTLKPQAPQAGPIVAPIGTLKPQPVPASY TTASTSSRPTFNVQVKSQAQSPHYMAAPSSGQIYSGSPQGYNTQPVPVSGQCPPPSTRGGMDYAYIPPPG LQPEPGYGYAPNQGRYYEGYYAAGPGYGGRNDSPTYGQQGHPNTWKREPGYTPPGAGNQNP GMYPVTG PKKTYITDPVSAPCAPLQPKGGHSGQLGPSSVAPSRPEDELEHLTKKMLYDMENPPADEYFGRCARCG ENVWEGGTGCTAMDQVFHVDCFTCIICNNKLRGQPFYAVEKKAYCEPCYINTLEQCNVCSKPIMERILRA TGKAYHPHCFTCVMCHRSLDGIPFTVDAGGLIHCIEDFHKKFAPRCSVCKEPI MPAPGQEETVRIVALDR DFHVHCYRCEDCGLLSEGDNQGCYPLDGHILCKTCNSARIRVLTAKASTDL</p> <p>TRTRPLEQKLISEEDLAANDILDYKDDDDKV</p>
Tag:	C-Myc/DDK
Predicted MW:	65.6 kDa
Concentration:	>0.05 µg/µL as determined by microplate BCA method
Purity:	> 80% as determined by SDS-PAGE and Coomassie blue staining
Buffer:	25 mM Tris-HCl, 100 mM glycine, pH 7.3, 10% glycerol
Preparation:	Recombinant protein was captured through anti-DDK affinity column followed by conventional chromatography steps.
Note:	For testing in cell culture applications, please filter before use. Note that you may experience some loss of protein during the filtration process.
Storage:	Store at -80°C.



[View online »](#)

Stability:	Stable for 12 months from the date of receipt of the product under proper storage and handling conditions. Avoid repeated freeze-thaw cycles.
RefSeq:	NP_005569
Locus ID:	4026
UniProt ID:	Q93052
RefSeq Size:	18296
Cytogenetics:	3q27.3-q28
RefSeq ORF:	1836
Summary:	This gene encodes a member of a subfamily of LIM domain proteins that are characterized by an N-terminal proline-rich region and three C-terminal LIM domains. The encoded protein localizes to the cell periphery in focal adhesions and may be involved in cell-cell adhesion and cell motility. This protein also shuttles through the nucleus and may function as a transcriptional co-activator. This gene is located at the junction of certain disease-related chromosomal translocations, which result in the expression of chimeric proteins that may promote tumor growth. Alternative splicing results in multiple transcript variants. [provided by RefSeq, Jul 2014]

Product images:



Coomassie blue staining of purified LPP protein (Cat# [TP324539]). The protein was produced from HEK293T cells transfected with LPP cDNA clone (Cat# [RC224539]) using MegaTran 2.0 (Cat# [TT210002]).