

Product datasheet for **TP324513L**

MOBKL2C (MOB3C) (NM_201403) Human Recombinant Protein

Product data:

Product Type:	Recombinant Proteins
Description:	Recombinant protein of human MOB1, Mps One Binder kinase activator-like 2C (yeast) (MOBKL2C), transcript variant 2, 1 mg
Species:	Human
Expression Host:	HEK293T
Expression cDNA Clone or AA Sequence:	>RC224513 protein sequence Red =Cloning site Green =Tags(s)

MALCLKQVFAKDKTFRPRKRFEFGTQRFELYKKAQASLKSGLDLRSVRLPPGENIDDWIAVHVVDFFNR
INLIYGTMAERCSETSCPVMAGGPRYEYRWQDERQYRRPAKLSAPRYMALLMDWIEGLINDEEVFPTVRV
VPFKNFQQVCTKILTRLFRVHVYIHHFDSILSMGAEAHVNTCYKHFYFIREFSLVDQRELEPLREM
TERICH

SGPTRTRPLEQKLISEEDLAANDILDYKDDDDKV

Tag:	C-Myc/DDK
Predicted MW:	25.4 kDa
Concentration:	>0.05 µg/µL as determined by microplate BCA method
Purity:	> 80% as determined by SDS-PAGE and Coomassie blue staining
Buffer:	25 mM Tris-HCl, 100 mM glycine, pH 7.3, 10% glycerol
Preparation:	Recombinant protein was captured through anti-DDK affinity column followed by conventional chromatography steps.
Note:	For testing in cell culture applications, please filter before use. Note that you may experience some loss of protein during the filtration process.
Storage:	Store at -80°C.
Stability:	Stable for 12 months from the date of receipt of the product under proper storage and handling conditions. Avoid repeated freeze-thaw cycles.
RefSeq:	<u>NP_958805</u>
Locus ID:	148932



[View online »](#)

UniProt ID: [Q70IA8](#)

RefSeq Size: 2822

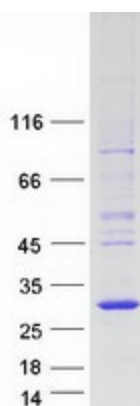
Cytogenetics: 1p33

RefSeq ORF: 648

Synonyms: MOB1E; MOBKL2C

Summary: The protein encoded by this gene is similar to the yeast Mob1 protein. Yeast Mob1 binds Mps1p, a protein kinase essential for spindle pole body duplication and mitotic checkpoint regulation. Alternatively spliced transcript variants encoding distinct isoforms have been observed. [provided by RefSeq, Jul 2008]

Product images:



Coomassie blue staining of purified MOB3C protein (Cat# [TP324513]). The protein was produced from HEK293T cells transfected with MOB3C cDNA clone (Cat# [RC224513]) using MegaTran 2.0 (Cat# [TT210002]).