

Product datasheet for TP324421

Syntrophin (SNTB1) (NM_021021) Human Recombinant Protein

Product data:

Product Type:	Recombinant Proteins
Description:	Recombinant protein of human syntrophin, beta 1 (dystrophin-associated protein A1, 59kDa, basic component 1) (SNTB1), 20 µg
Species:	Human
Expression Host:	HEK293T
Expression cDNA Clone or AA Sequence:	>RC224421 representing NM_021021 Red=Cloning site Green=Tags(s)

MAVAAAAAAGPAGAGGGRAQRSGLLEVLVRDRWHKVLVNLSEDALVLSSEEGAAAYNGIGTATNGSFCR
GAGAGHPGAGGAQPPDSPAGVRTAFTDLPEQVPESISNQKRGVKVLKQELGGLGISIKGGKENKMPILIS
KIFKGLAADQTQALYVGDAILSVNGADLRDATHDEAVQALKRAGKEVLEVKYMRATPYVKKGSPVSEI
GWETPPPEPRLGGSTSDPPSSQSFSFHRDRKSIPLKMCYVTRSMALADPENRQLEIHSPDAKHTVILRS
KDSATAQAWFSAIHSNVNDLLTRVIAEVREQLGKTGIAGSREIRHLGWLAEKVPGESKKQWKPALVVLTE
KDLLIYDSMPRRKEAWFSPVHTYPLLATRLVHSGPGKQAGVDLSFATRTGTRQGIETHLFRAETSRD
LSHWTRSIVQGCHNSAELIAEISTACTYKNQECRLTIHYENGFSITTEPQEGAFPKTHIQSPYEKLMSS
DDGIRMLYLDFGGKDGELDLHSCPKPIVFIHSFLSAKITRLGLVA

TRTRPLEQKLISEEDLAANDILDYKDDDDKV

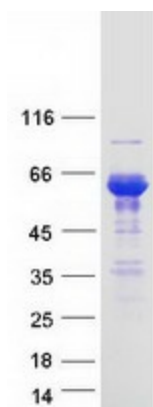
Tag:	C-Myc/DDK
Predicted MW:	57.9 kDa
Concentration:	>0.05 µg/µL as determined by microplate BCA method
Purity:	> 80% as determined by SDS-PAGE and Coomassie blue staining
Buffer:	25 mM Tris-HCl, 100 mM glycine, pH 7.3, 10% glycerol
Preparation:	Recombinant protein was captured through anti-DDK affinity column followed by conventional chromatography steps.
Note:	For testing in cell culture applications, please filter before use. Note that you may experience some loss of protein during the filtration process.
Storage:	Store at -80°C.



[View online »](#)

Stability:	Stable for 12 months from the date of receipt of the product under proper storage and handling conditions. Avoid repeated freeze-thaw cycles.
RefSeq:	NP_066301
Locus ID:	6641
UniProt ID:	Q13884
RefSeq Size:	2978
Cytogenetics:	8q24.12
RefSeq ORF:	1614
Synonyms:	59-DAP; A1B; BSYN2; DAPA1B; SNT2; SNT2B1; TIP-43
Summary:	Dystrophin is a large, rod-like cytoskeletal protein found at the inner surface of muscle fibers. Dystrophin is missing in Duchenne Muscular Dystrophy patients and is present in reduced amounts in Becker Muscular Dystrophy patients. The protein encoded by this gene is a peripheral membrane protein found associated with dystrophin and dystrophin-related proteins. This gene is a member of the syntrophin gene family, which contains at least two other structurally-related genes. [provided by RefSeq, Jul 2008]

Product images:



Coomassie blue staining of purified SNTB1 protein (Cat# TP324421). The protein was produced from HEK293T cells transfected with SNTB1 cDNA clone (Cat# [RC224421]) using MegaTran 2.0 (Cat# [TT210002]).