

Product datasheet for **TP324408M**

ATP1B4 (NM_012069) Human Recombinant Protein

Product data:

Product Type: Recombinant Proteins
Description: Recombinant protein of human ATPase, (Na⁺)/K⁺ transporting, beta 4 polypeptide (ATP1B4), transcript variant 2, 100 µg

Species: Human

Expression Host: HEK293T

Expression cDNA Clone or AA Sequence: >RC224408 representing NM_012069
Red=Cloning site **Green**=Tags(s)

MRRQLRSRRAPSPFPYSYRYRLDDPDEANQNYLADEEEEEAEERVTWPKSEEEEEEEEEEEEEEEEEEE
EEGQGQPTGNAWWQKLQIMSEYLWDPERRMFLARTGLILLIYFFFYASLAAVITLCMYTLFLTISPIYPT
FTERVKPPGVMIRPFAHSLNFNFNVSEPDWQHVISLNGFLQGYNDSLQEEMNVDCPPGQYFIQDGNED
EDKKACQFKRSFLKNCSGLEDPTFGYSTGQPCILLKMNRIVGRPELGDPVKVSKVQRGDENDIRSISY
YPESASFDLRYPYGYGLTHVNYTSPLVAMHFTDVVKNQAVPVQCQLKGGKGVINDRVINDRFVGRVIFTLN
IET

TRTRPLEQKLISEEDLAANDILDYKDDDDKV

Tag: C-Myc/DDK

Predicted MW: 40.9 kDa

Concentration: >0.05 µg/µL as determined by microplate BCA method

Purity: > 80% as determined by SDS-PAGE and Coomassie blue staining

Buffer: 25 mM Tris-HCl, 100 mM glycine, pH 7.3, 10% glycerol

Preparation: Recombinant protein was captured through anti-DDK affinity column followed by conventional chromatography steps.

Note: For testing in cell culture applications, please filter before use. Note that you may experience some loss of protein during the filtration process.

Storage: Store at -80°C.

Stability: Stable for 12 months from the date of receipt of the product under proper storage and handling conditions. Avoid repeated freeze-thaw cycles.

RefSeq: [NP_036201](#)



[View online »](#)

Locus ID: 23439

UniProt ID: [Q9UN42](#)

RefSeq Size: 3857

Cytogenetics: Xq24

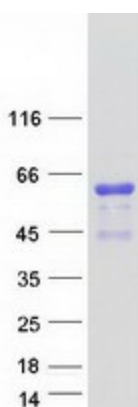
RefSeq ORF: 1059

Summary: This gene has been found in all vertebrate genomes sequenced to date. However, this gene has undergone a change in function in placental mammals compared to other species. Specifically, in fish, avian, and amphibian species, this gene encodes plasma membrane-bound beta-subunits of Na,K-ATPase. In placental mammals, the encoded protein interacts with the nuclear transcriptional coregulator SKIP and may be involved in the regulation of TGF-beta signaling. Two transcript variants encoding different isoforms have been found for this gene. [provided by RefSeq, Mar 2010]

Protein Families: Transmembrane

Protein Pathways: Cardiac muscle contraction

Product images:



Coomassie blue staining of purified ATP1B4 protein (Cat# [TP324408]). The protein was produced from HEK293T cells transfected with ATP1B4 cDNA clone (Cat# [RC224408]) using MegaTran 2.0 (Cat# [TT210002]).